



Interim SSDP Project Fact Sheet



SSO Project Number: Interim SSDP Project

Project Name: Beechwood Village Sanitary Sewer Replacement

Modeled Area: N/A

Branch or SSO ID: N/A

Project Type: Sewer Replacement

Receiving Stream: Upper Sinking Fork

Project Description: This project includes replacing the entire local system, including 23,700 LF of sewer pipe and 580 homeowner's service connections. Existing pipes will be left in place as stormwater collection pipes. The project will be completed in two phases, East and West.

Reason for Overflow: System Capacity and Inflow/Infiltration

Design Parameters / Assumptions: N/A

Project Constraints: Sinking Fork Relief Sewer must be completed first

Estimated Capital Cost (2008 dollars): \$11,800,000

Weighted Benefit/Cost Ratio (Present Worth): N/A

Overflow Points Addressed:




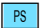








<u>SSO</u>	<u>SSO Name</u>	<u>Service Area</u>	<u>Overflow Type</u>	<u>Discharge To</u>	<u>Average Overflow / Incident (gallons)</u>
21061	4432 Cordova Road & Tyne Avenue	Morris Forman	(IFP) Pumped	Catch Basin	2,114,680
21089	207 Brunswick Road	Morris Forman	(IFP) Pumped	Catch Basin	1,924,520

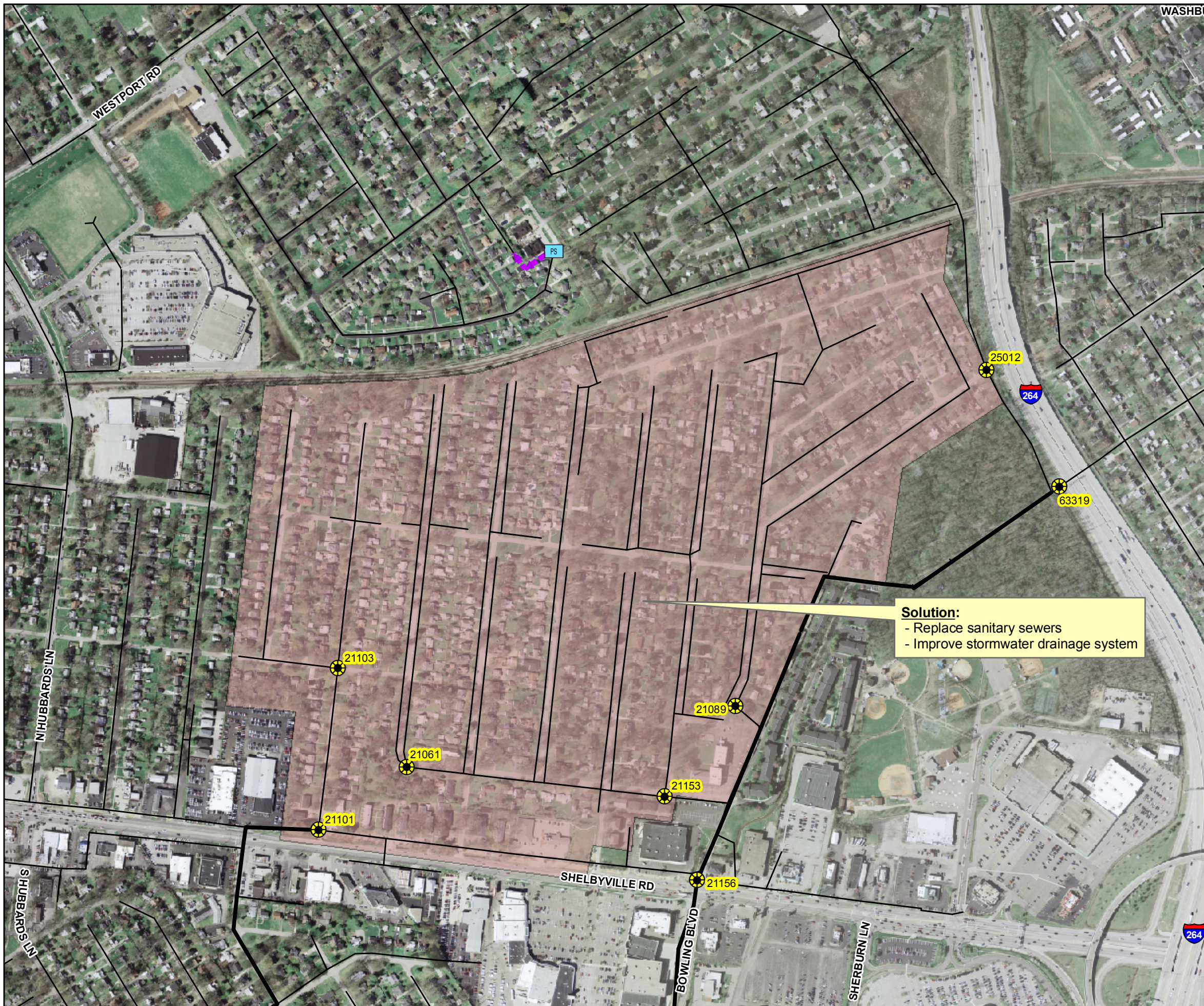
21101	Shelbyville Road & Marshall Drive	Morris Forman	(IFP) Pumped	Ditch	3,116,459
21153	Biltmore Road & Cordova Road	Morris Forman	(IFP) Pumped	Catch Basin	2,108,844
21156	Shelbyville Road & Stonehenge Road	Morris Forman	(IFP) Pumped	Catch Basin	2,536,542

**Integrated Overflow Abatement Plan
Interim Sanitary Sewer Discharge Plan**

**Beechwood Village
Sanitary Sewer Replacements**

Legend

-  Documented SSO
-  Suspected SSO
-  WWTP
-  Pump Station
-  Force Main
-  Force Main non MSD
-  MSD Sewer
-  non msd pipes
-  Combined Sewer Pipe
-  Streams
-  Beechwood Village
-  Metro Parks



General representation of overflow abatement solutions are for preliminary planning purposes. Alignments and locations may be altered during design.

1 inch = 500 feet
Scalable when printed on 11" X 17" paper



Some boundaries are uniquely symbolized within the map.

Map Revision
May 07, 2009
Aerial Date: 2006



Copyright © 2008 LOUISVILLE AND JEFFERSON COUNTY METROPOLITAN SEWER DISTRICT (MSD), LOUISVILLE WATER COMPANY, LOUISVILLE METRO GOVERNMENT, and JEFFERSON COUNTY PROPERTY VALUATION ADMINISTRATOR (PVA). All Rights Reserved.



Interim SSDP Project Fact Sheet



SSO Project Number: Interim SSDP Project

Project Name: Hikes Lane Interceptor and Highgate Springs PS

Modeled Area: N/A

Branch or SSO ID: N/A

Project Type: Pump Station Elimination and New Interceptor

Receiving Stream: South Fork Beargrass Creek and Wedgewood Ditch

Project Description: This project includes improvements to the Hikes Point Sewer System and eliminates the Highgate Springs Pump Station. In the general Hikes Point area includes improvements of 3,500 LF of new or replacement sewers, and decommissioning the Highgate Springs Pump Station. The new Hikes Lane Interceptor consists of 10,000 LF of 72-inch sewer that connects to Southeastern Interceptor.

Reason for Overflow: System and Pump Station Capacity

Design Parameters / Assumptions: N/A

Project Constraints: N/A

Estimated Capital Cost (2008 dollars): \$21,216,000

Weighted Benefit/Cost Ratio (Present Worth): N/A

Overflow Points Addressed:

<u>SSO</u>	<u>SSO Name</u>	<u>Service Area</u>	<u>Overflow Type</u>	<u>Discharge To</u>	<u>Average Overflow / Incident (gallons)</u>
17571	Carson Way & Ribble Road	Morris Forman	(IFP) Pumped	Catch Basin	1,380,492
18134	Downing at Wyckford Way	Morris Forman	Manhole	Catch Basin	100

18298	Gerald Court #3	Morris Forman	Manhole	Stream	59,418
18302	Bardstown Rd / Paris Dr	Morris Forman	Manhole	Catch Basin	No data
18318-W	Terrier Lane PS Wet Well	Morris Forman	Manhole	Stream	108,000
18434	Between Johnston Way & Ainslie Way	Morris Forman	Manhole	Catch Basin	275
18471	Dell Brooke Avenue & Boaries Lane	Morris Forman	(IFP) Pumped	Catch Basin	2,510,635
18483	3012 Boaries Avenue & Rio Rita Avenue	Morris Forman	(IFP) Pumped	Catch Basin	1,826,668
18505	3540 Ramona Avenue & Flora Avenue	Morris Forman	(IFP) Pumped	Catch Basin	1,907,896
18595	3101 Wedgewood Way	Morris Forman	(IFP) Pumped	Ditch	1,621,550
49236	Rosemont Boulevard at Hikes Lane	Morris Forman	Manhole	Ground	150
49672	Gerald Court #2	Morris Forman	Manhole	Ground	317,217
49673	Gerald Court #1	Morris Forman	Manhole	Catch Basin	23,250
49224	Goldsmith Ln at Beargrass Creek- Near Dell Brook Av	Morris Forman	Manhole	Stream	27,040
MSD0012-PS	Highgate Springs	Morris Forman	Constructed	Stream	4,551,300

Integrated Overflow Abatement Plan

Interim Sanitary Sewer Discharge Plan

Hikes Lane Interceptor and Highgate Springs Pump Station



Solution:
New Relief Sewer

Solution:
Increase Capacity

Solution:
Remove Hydraulic
Cconstriction

Solution:
- Offload portion of flow tributary to HSPS
to New Hikes Lane Interceptor
- Decommission HSPS

Solution:
- Construct 10,000 LF of 72" Interceptor

Southeast Diversion
Structure

Existing Beargrass Interceptor

New Hikes Lane Interceptor

Highgate Springs
Pump Station

72571-X

30681

30680

30704

30701

08430

08426

08427

08379

- Legend**
- Documented SSO
 - Suspected SSO
 - WWTP
 - Pump Station
 - New Construction
 - Force Main
 - Force Main non MSD
 - MSD Sewer
 - Non MSD Pipes
 - Combined Sewer Pipe
 - Streams
 - Hikes Point
 - Metro Parks

General representation of overflow abatement solutions are for preliminary planning purposes. Alignments and locations may be altered during design.

1 inch = 1,300 feet
Scalable when printed on 11" X 17" paper



Some boundaries are uniquely symbolized within the map.
Map Revision
May 07, 2009
Aerial Date: 2006



Copyright © 2008 LOUISVILLE AND JEFFERSON COUNTY METROPOLITAN SEWER DISTRICT (MSD), LOUISVILLE WATER COMPANY, LOUISVILLE METRO GOVERNMENT, and JEFFERSON COUNTY PROPERTY VALUATION ADMINISTRATOR (PVA). All Rights Reserved.



Interim SSDP Project Fact Sheet



SSO Project Number: Interim SSDP Project

Project Name: Sinking Fork Relief Sewer

Modeled Area: N/A

Branch or SSO ID: N/A

Project Type: New Relief Sewer

Receiving Stream: Middle Fork Beargrass Creek and Upper Sinking Fork

Project Description: This project includes conveying flow from some of the new Beechwood Village sewers and providing additional wet weather capacity downstream of the Beechwood Village East area to accommodate upstream SSDP projects. The project includes installing 2,800 LF of 24-inch relief sewer.

Reason for Overflow: System Capacity

Design Parameters / Assumptions: N/A

Project Constraints: Project is subject to a potential change due to upstream projects

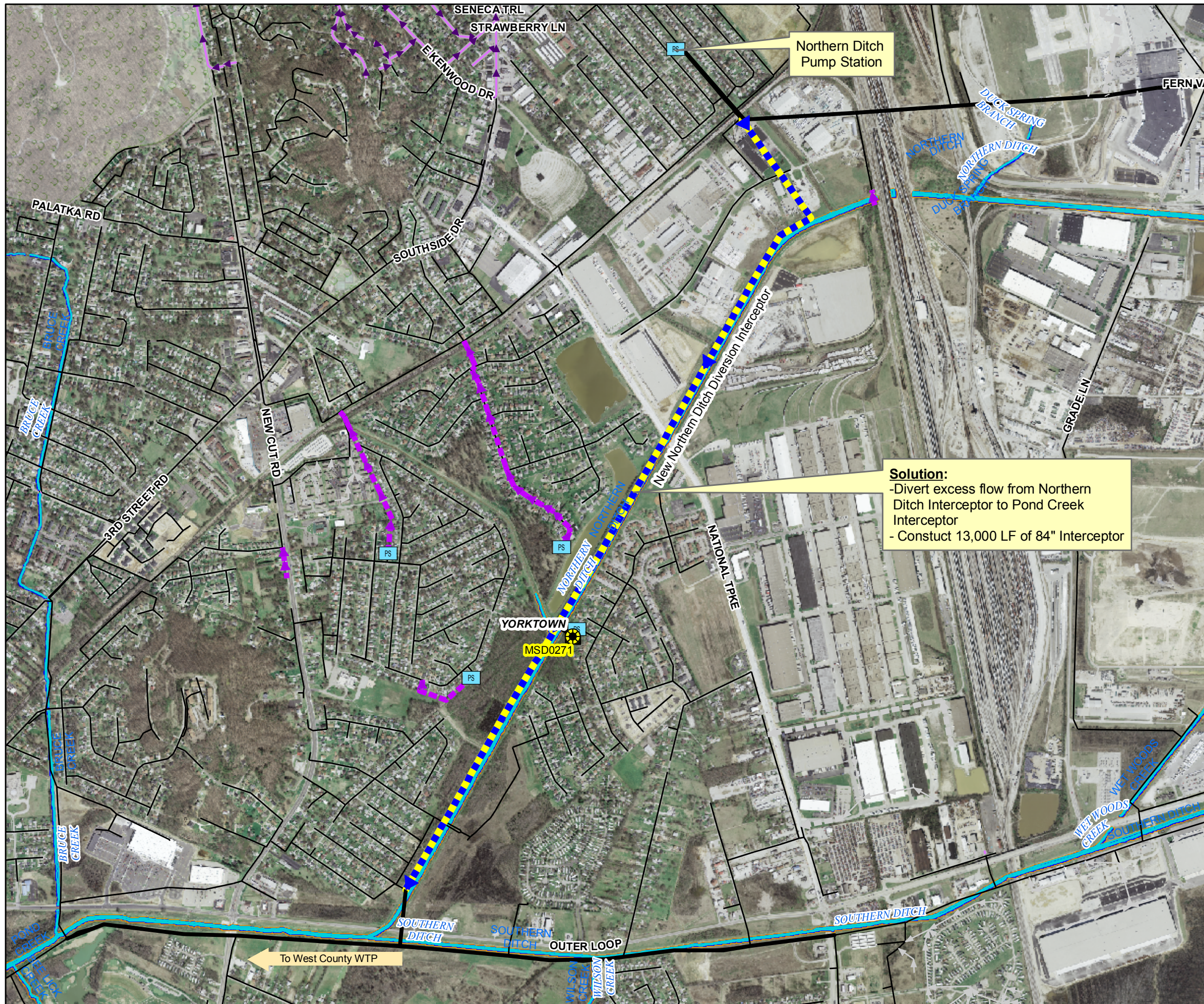
Estimated Capital Cost (2008 dollars): \$1,690,000

Weighted Benefit/Cost Ratio (Present Worth): N/A

Overflow Points Addressed:

<u>SSO</u>	<u>SSO Name</u>	<u>Service Area</u>	<u>Overflow Type</u>	<u>Discharge To</u>	<u>Average Overflow / Incident (gallons)</u>
21103	Blenheim Road / Taggart Drive	Morris Forman	Manhole	Catch Basin	75
25012	Beaver Road	Morris Forman	Manhole	Ditch	1,480,406
63319	Watterson Expressway	Morris Forman	Manhole	Ditch	296,704

Integrated Overflow Abatement Plan
Interim Sanitary Sewer Discharge Plan
Northern Ditch Diversion Interceptor



- Legend**
- Documented SSO
 - Suspected SSO
 - WWTP
 - Pump Station
 - New Construction
 - Force Main
 - Force Main non MSD
 - MSD Sewer
 - Non MSD Pipes
 - Combined Sewer Pipe
 - Streams
 - Hikes Point
 - Metro Parks

Solution:
 -Divert excess flow from Northern Ditch Interceptor to Pond Creek Interceptor
 - Construct 13,000 LF of 84" Interceptor

General representation of overflow abatement solutions are for preliminary planning purposes. Alignments and locations may be altered during design.

1 inch = 1,300 feet
 Scalable when printed on 11" X 17" paper



Some boundaries are uniquely symbolized within the map.
 Map Revision
 May 07, 2009
 Aerial Date: 2006



Copyright © 2008 LOUISVILLE AND JEFFERSON COUNTY METROPOLITAN SEWER DISTRICT (MSD), LOUISVILLE WATER COMPANY, LOUISVILLE METRO GOVERNMENT, and JEFFERSON COUNTY PROPERTY VALUATION ADMINISTRATOR (PVA). All Rights Reserved.



Interim SSDP Project Fact Sheet



SSO Project Number: Interim SSDP Project

Project Name: Southeastern Diversion Structure and Interceptor

Modeled Area: N/A

Branch or SSO ID: N/A

Project Type: New relief sewer and flow control modifications

Receiving Stream: South Fork Beargrass Creek

Project Description: This project includes improvements to the Southeast Diversion Structure for increased flows due to the Hikes Lane Interceptor and other Final SSDP projects. The project will consist of a new parallel Southeastern Interceptor relief sewer, two flow control junction boxes, and modifications to the existing Southeastern Diversion Structure (including removing control weirs and reprogramming Real Time Control gates).

Reason for Overflow: System Capacity

Design Parameters / Assumptions: N/A

Project Constraints: Project is subject to a potential change due to upstream projects

Estimated Capital Cost (2008 dollars): \$1,744,000

Weighted Benefit/Cost Ratio (Present Worth): N/A

Overflow Points Addressed:

<u>SSO</u>	<u>SSO Name</u>	<u>Service Area</u>	<u>Overflow Type</u>	<u>Discharge To</u>	<u>Average Overflow / Incident (gallons)</u>
08426	Pruitt Court #5	Morris Forman	Manhole	Ground	9,661
08427	Pruitt Court #6	Morris Forman	Manhole	Ground	13,500

08430	Pruitt Court #1	Morris Forman	Manhole	Ground	402,571
08431	Pruitt Court #2	Morris Forman	Manhole	Ground	35,500
30701	Pruitt Court #3	Morris Forman	Manhole	Stream	81,000
30702	Pruitt Court #4	Morris Forman	Manhole	Stream	81,000
49647	Pruitt Court #8	Morris Forman	Manhole	Ground	956,053
63779	Pruitt Court #7	Morris Forman	Manhole	Ground	2,268,606
30680	3420 Fountain Dr near Buechel Branch	Morris Forman	Manhole	Ground	29,582
30681	3401 Fountian Drive at Creek	Morris Forman	Manhole	Ground	23,100
72571-X	Southeast Diversion Structure	Morris Forman	Constructed	Stream	7,216,243

Integrated Overflow Abatement Plan
Interim Sanitary Sewer Discharge Plan
Sinking Fork Relief Sewer



Solution:
 - Construct 2,800 LF of 24" Interceptor

Legend

- Documented SSO
- Suspected SSO
- WWTP
- Pump Station
- New Construction
- Force Main
- Force Main non MSD
- MSD Sewer
- non msd pipes
- Combined Sewer Pipe
- Streams
- Beechwood Village
- Metro Parks

General representation of overflow abatement solutions are for preliminary planning purposes. Alignments and locations may be altered during design.

1 inch = 350 feet
 Scalable when printed on 11" X 17" paper



Some boundaries are uniquely symbolized within the map.

Map Revision
 May 07, 2009

Aerial Date: 2006



Copyright © 2008, LOUISVILLE AND JEFFERSON COUNTY METROPOLITAN SEWER DISTRICT (MSD), LOUISVILLE WATER COMPANY, LOUISVILLE METRO GOVERNMENT, and JEFFERSON COUNTY PROPERTY VALUATION ADMINISTRATOR (PVA). All Rights Reserved.



Interim SSDP Project Fact Sheet



SSO Project Number: Interim SSDP Project

Project Name: Northern Ditch Diversion Interceptor

Modeled Area: N/A

Branch or SSO ID: N/A

Project Type: New Interceptor / WQTC Elimination

Receiving Stream: Northern Ditch

Project Description: This project includes construction of a new Northern Ditch Diversion Interceptor which will allow flow from upstream projects to reach the Derek R. Guthrie WQTC. The project consists of 13,000 LF of 84-inch pipe constructed along Greasy Ditch from the Northern Ditch Pump Station to the Pond Creek Interceptor.

Reason for Overflow: System Capacity

Design Parameters / Assumptions: N/A

Project Constraints: Project is dependent on Derek R. Guthrie WQTC Improvements

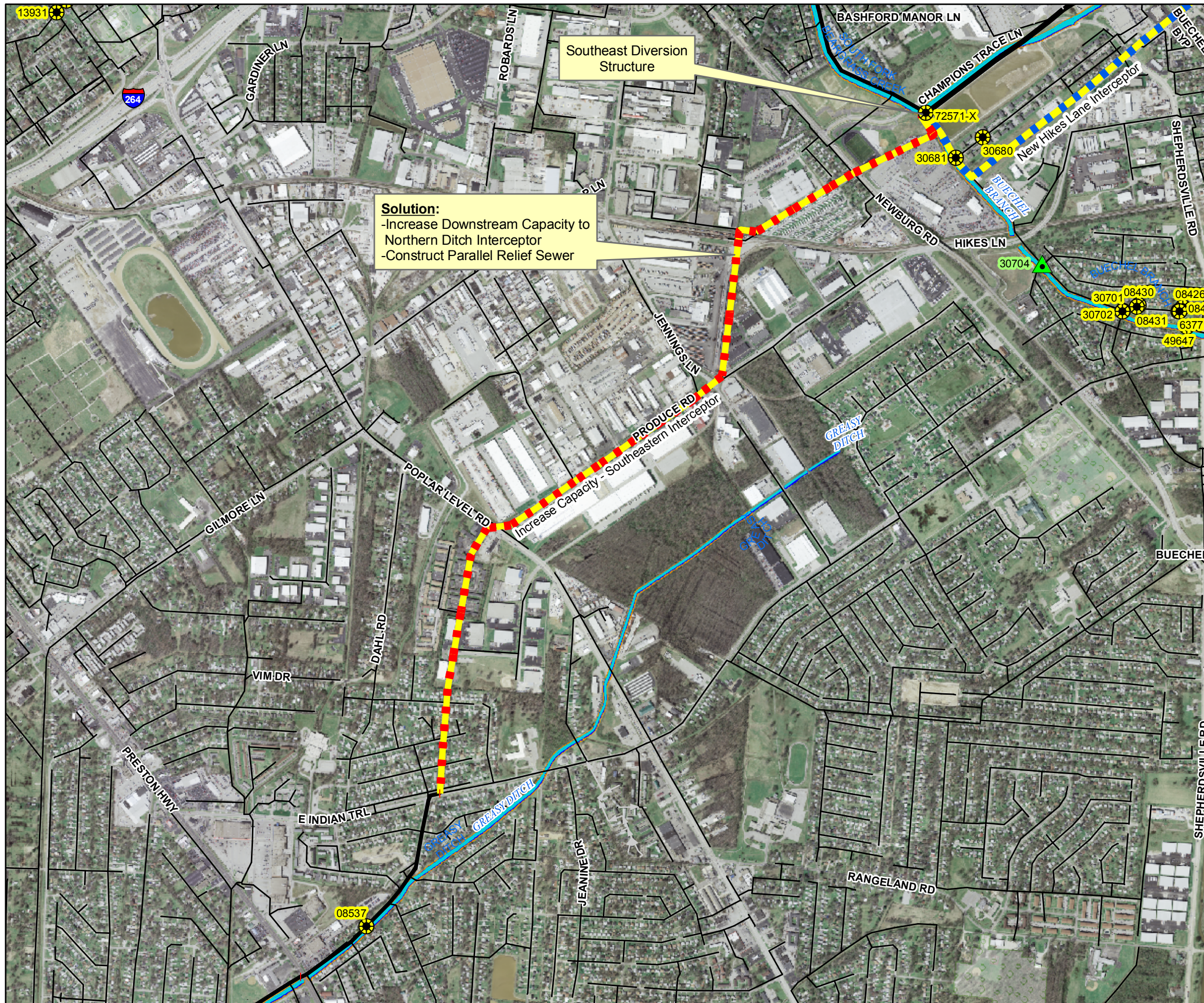
Estimated Capital Cost (2008 dollars): \$20,397,000

Weighted Benefit/Cost Ratio (Present Worth): N/A

Overflow Points Addressed:

<u>SSO</u>	<u>SSO Name</u>	<u>Service Area</u>	<u>Overflow Type</u>	<u>Discharge To</u>	<u>Average Overflow / Incident (gallons)</u>
MSD0271	Yorktown	Yorktown	Sewer Treatment Plant	Ditch	7,191

Integrated Overflow Abatement Plan
Interim Sanitary Sewer Discharge Plan
Southeastern Diversion
Structure and Interceptor



Solution:
 -Increase Downstream Capacity to Northern Ditch Interceptor
 -Construct Parallel Relief Sewer

Southeastern Diversion Structure

- Legend**
- Documented SSO
 - Suspected SSO
 - WWTP
 - Pump Station
 - New Construction
 - Modify Existing Sewer
 - Force Main
 - Force Main non MSD
 - MSD Sewer
 - Non MSD Pipes
 - Combined Sewer Pipe
 - Streams
 - Hikes Point
 - Metro Parks

General representation of overflow abatement solutions are for preliminary planning purposes. Alignments and locations may be altered during design.

1 inch = 1,300 feet
 Scalable when printed on 11" X 17" paper



Some boundaries are uniquely symbolized within the map.
 Map Revision
 May 07, 2009
 Aerial Date: 2006



Copyright © 2008 LOUISVILLE AND JEFFERSON COUNTY METROPOLITAN SEWER DISTRICT (MSD), LOUISVILLE WATER COMPANY, LOUISVILLE METRO GOVERNMENT, and JEFFERSON COUNTY PROPERTY VALUATION ADMINISTRATOR (PVA). All Rights Reserved.



Interim SSDP Project Fact Sheet



SSO Project Number: Interim SSDP Project

Project Name: Derek R. Guthrie WQTC

Modeled Area: N/A

Branch or SSO ID: N/A

Project Type: WQTC Upgrade

Receiving Stream: Mill Creek, Black Pond Creek, Alvey Ditch, and the Ohio River

Project Description: This project includes improvements to the Derek R. Guthrie WQTC to allow treatment of all wet weather flow from other SSDP system improvements. The 100 MGD peak flow capacity secondary treatment facility will consist of a flow control structure, new influent pumps, piping modifications, new screening facility, a new equalization basin, construction of a wet weather pump station, and secondary clarifiers.

Reason for Overflow: Treatment Plant Capacity

Design Parameters / Assumptions: N/A

Project Constraints: N/A

Estimated Capital Cost (2008 dollars): \$102,700,000

Weighted Benefit/Cost Ratio (Present Worth): N/A




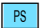






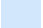

Overflow Points Addressed:

<u>SSO</u>	<u>SSO Name</u>	<u>Service Area</u>	<u>Overflow Type</u>	<u>Discharge To</u>	<u>Average Overflow / Incident (gallons)</u>
22370	Greenbelt Highway	West County	Manhole	Ground	4,858,000

22385	Johsontown Road #2	West County	Manhole	Stream	1,628,500
32682	12700 Abbey Road #2	West County	Manhole	Stream	2,392,000
32688	12701 Abbey Road #1	West County	Manhole	Ground	No Data
59169	Johsontown Road #1	West County	Manhole	Ground	1,905,250
MSD0277	West County	West County	Pumped	Stream	48,477,223

Integrated Overflow Abatement Plan
Interim Sanitary Sewer Discharge Plan
 Derek R. Guthrie WQTC

Legend

-  Documented SSO
-  Suspected SSO
-  WWTP
-  Pump Station
-  Force Main
-  Force Main non MSD
-  MSD Sewer
-  Non MSD Pipes
-  Combined Sewer Pipe
-  Streams
-  Hikes Point
-  Metro Parks

Equalization Basin

General representation of overflow abatement solutions are for preliminary planning purposes. Alignments and locations may be altered during design.

1 inch = 200 feet
 Scalable when printed on 11" X 17" paper



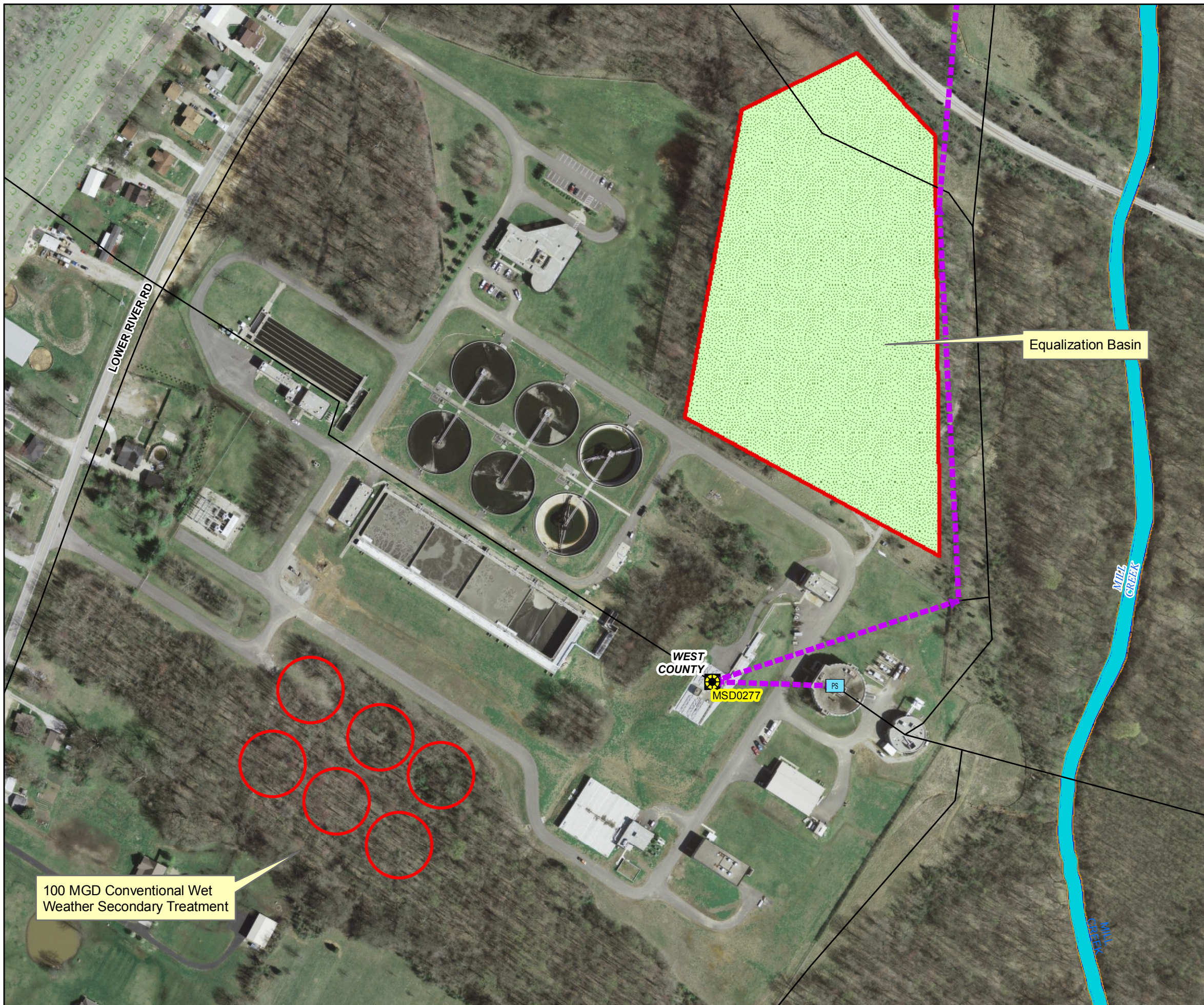
Some boundaries are uniquely symbolized within the map.

Map Revision
 May 07, 2009

Aerial Date: 2006



Copyright © 2008 LOUISVILLE AND JEFFERSON COUNTY METROPOLITAN SEWER DISTRICT (MSD), LOUISVILLE WATER COMPANY, LOUISVILLE METRO GOVERNMENT, and JEFFERSON COUNTY PROPERTY VALUATION ADMINISTRATOR (PVA). All Rights Reserved.



100 MGD Conventional Wet Weather Secondary Treatment

WEST COUNTY
 MSD0277

PS

MILL CREEK

LOWER RIVER RD



Final SSDP Project Fact Sheet



SSO Project Number: N/A

Project Name: CPE/CCP Modifications to WQTCs

Modeled Area: N/A

Branch or SSO ID: N/A

Project Type: Modifications to WQTCs

Receiving Stream: N/A

Project Description: This project provides funding for the implementation of Type 1 and Type 2 modifications recommended as part of the Comprehensive Performance Evaluation (CPE) and Composite Correction Program (CCP) conducted on several WQTCs

Reason for Overflow: N/A

Design Parameters / Assumptions: N/A

Project Constraints: N/A

Estimated Capital Cost (2008 dollars): \$2,600,000

Weighted Benefit/Cost Ratio (Present Worth): N/A

Overflow Points Addressed:

<u>SSO</u>	<u>SSO Name</u>	<u>Service Area</u>	<u>Overflow Type</u>	<u>Discharge To</u>	<u>Average Overflow / Incident (gallons)</u>
------------	-----------------	---------------------	----------------------	---------------------	--
