

I-64 and Grinstead CSO Basin

Advanced Design Meeting

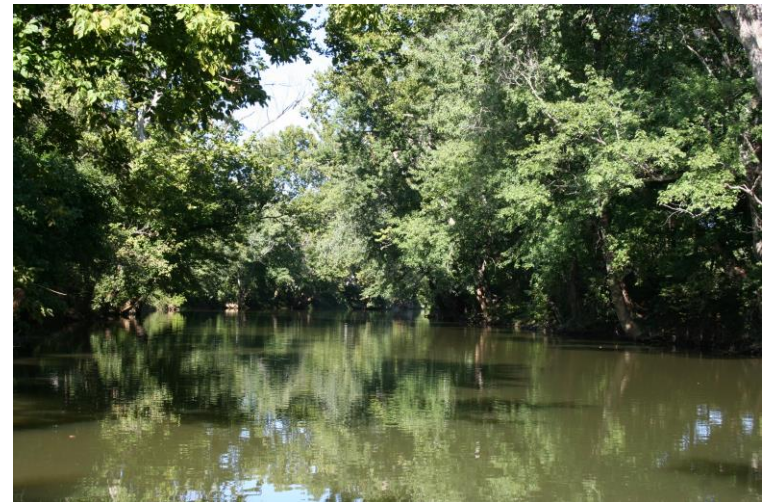
Girl Scouts of Kentuckiana

11.15.2016



What We Will Talk About Tonight

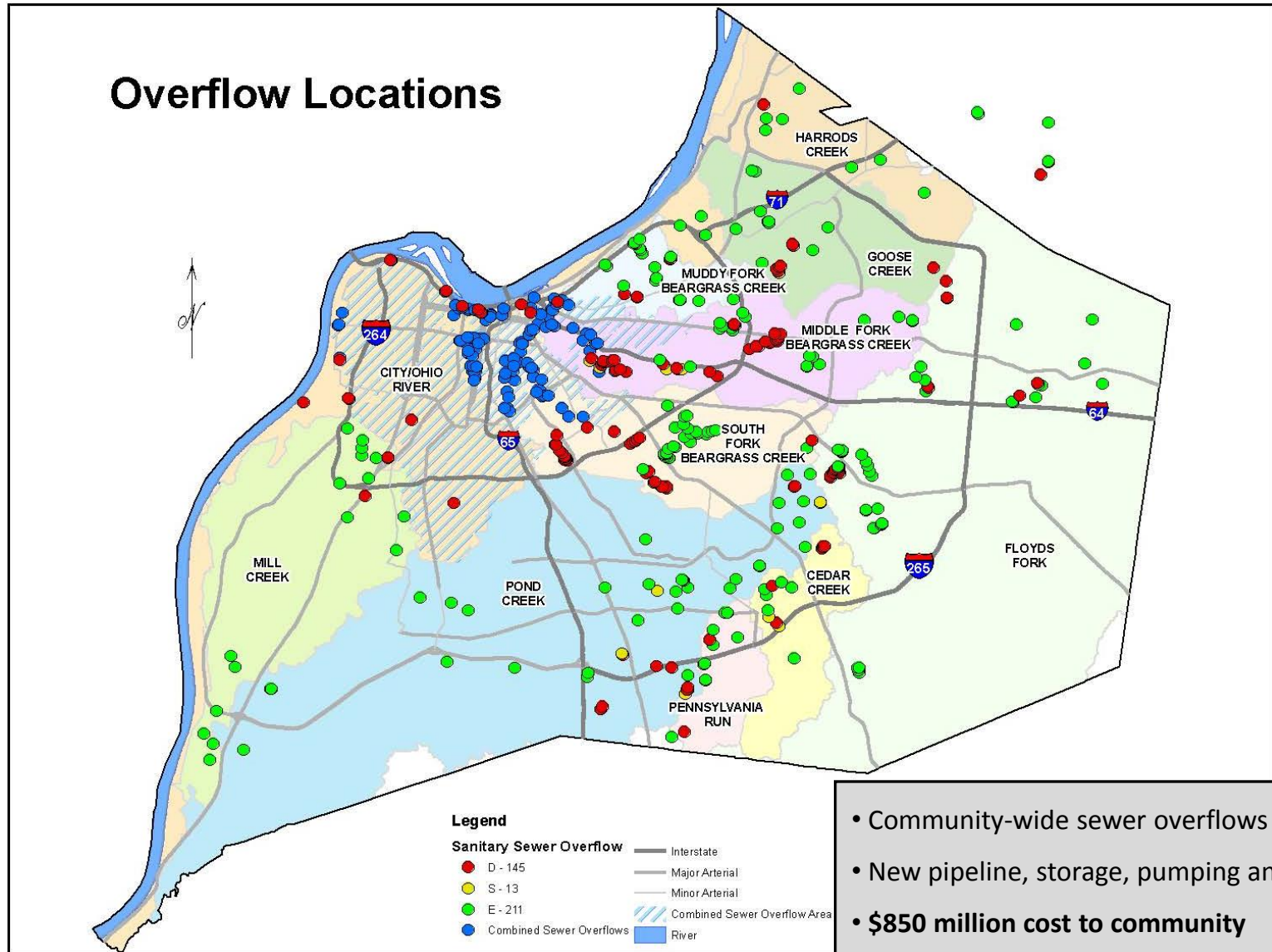
1. Why We Are Here
2. Public Outreach Process
3. Getting to Know You
4. I-64 and Grinstead CSO Basin Project
5. Next Steps
6. Feedback



1. Why We Are Here



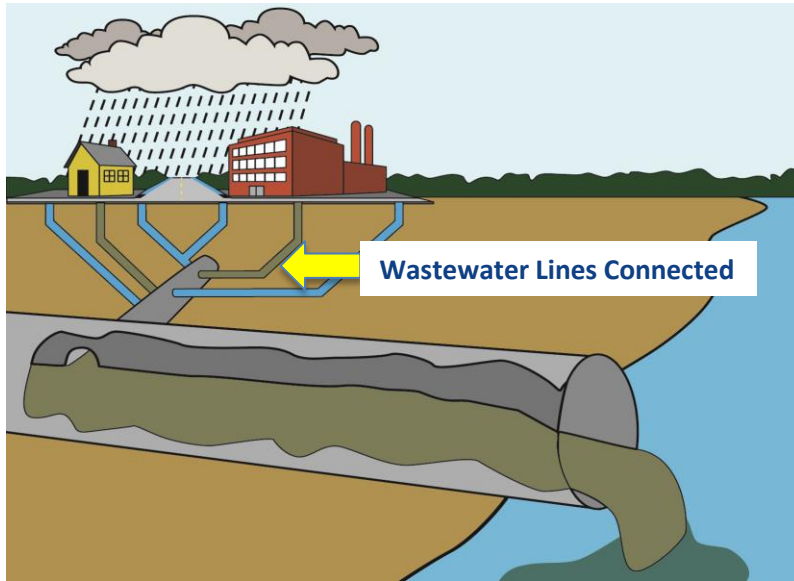
Sewer Overflow Locations



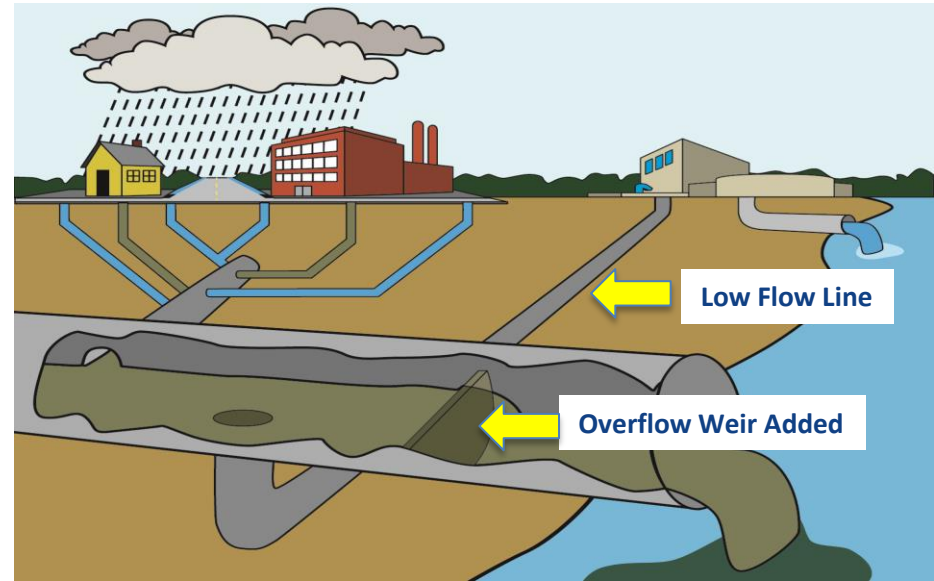
What is a Combined Sewer?

What is a combined sewer?

- Both storm water and wastewater conveyed in the same pipe



Original Combined Sewers discharged directly to rivers and streams



Wastewater treatment added in 1958. Dry weather flow treated. Some wet weather flow discharged to prevent flooding.

How Do We Control Overflows?

Source Control Projects

- Green infrastructure
- Downspout disconnections
- Sump pump disconnections
- Sewer rehabilitation

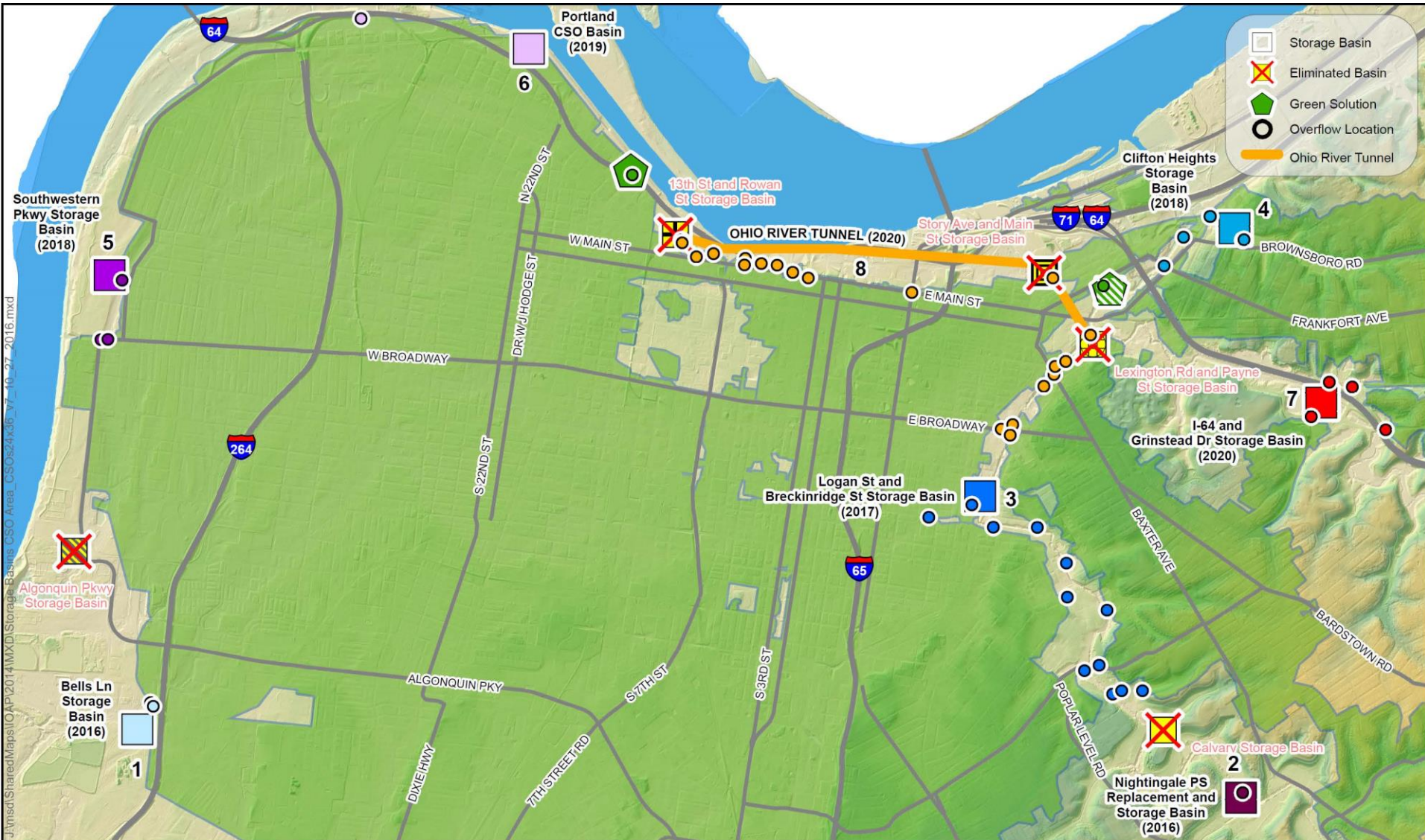


Gray Infrastructure Projects

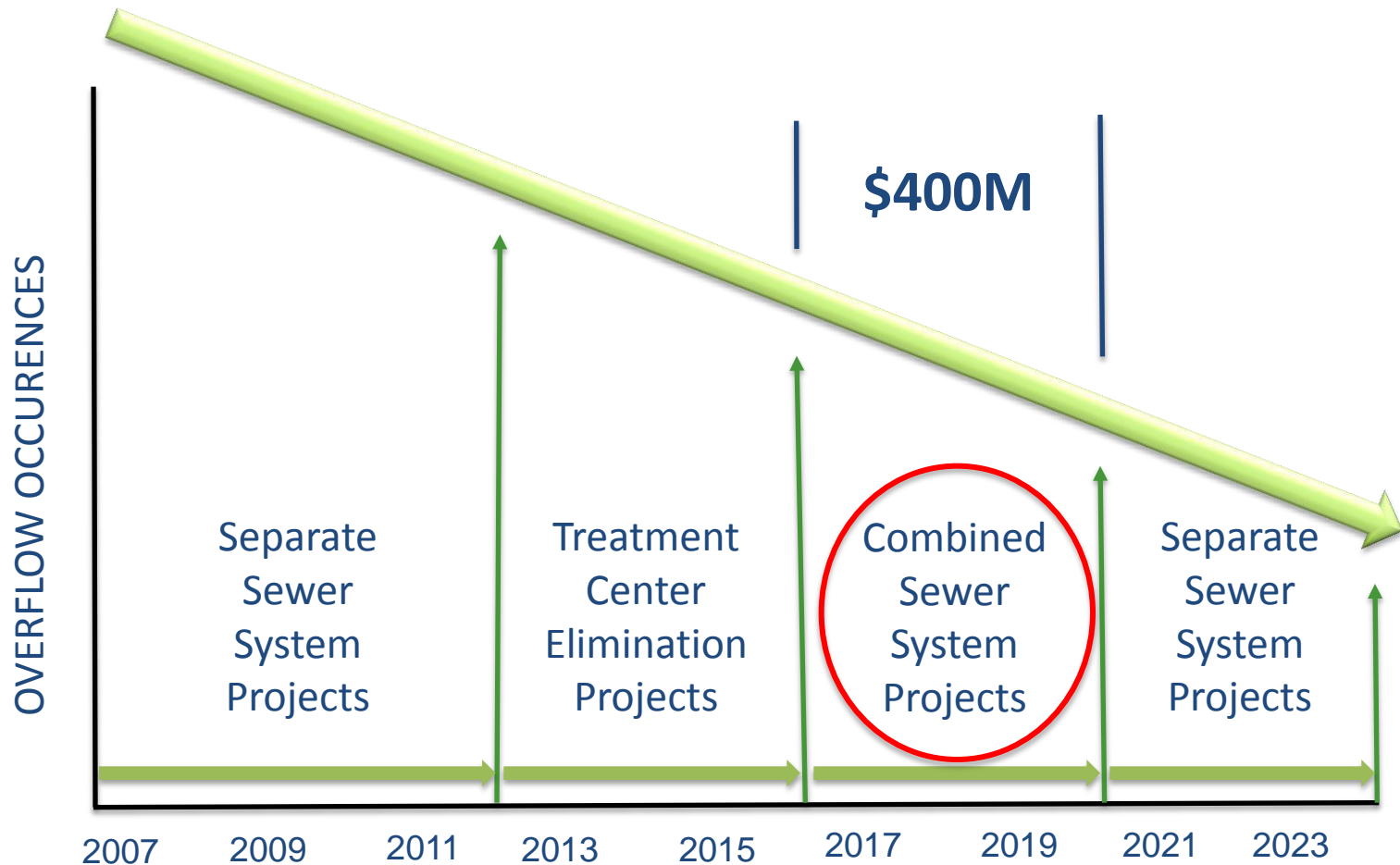
- Pipeline projects
- Pump station expansions
- Wastewater treatment plant expansions
- **Storage Basins**



CSO Storage Basins per Consent Decree



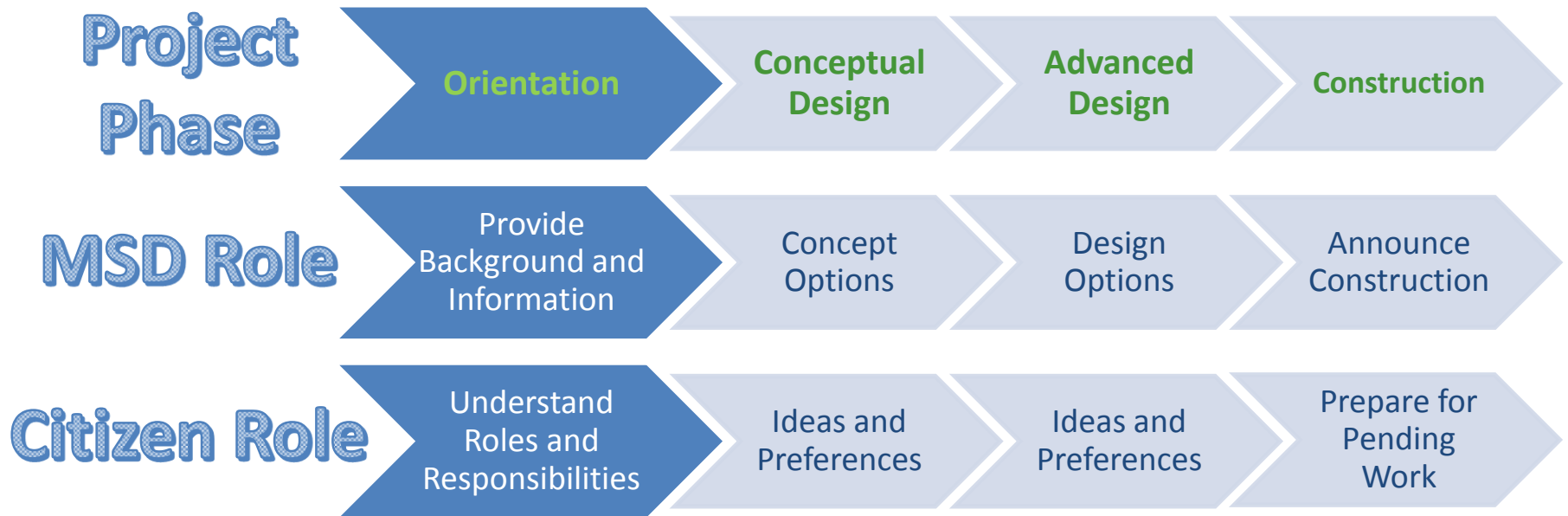
Program Status



2. Public Outreach Process



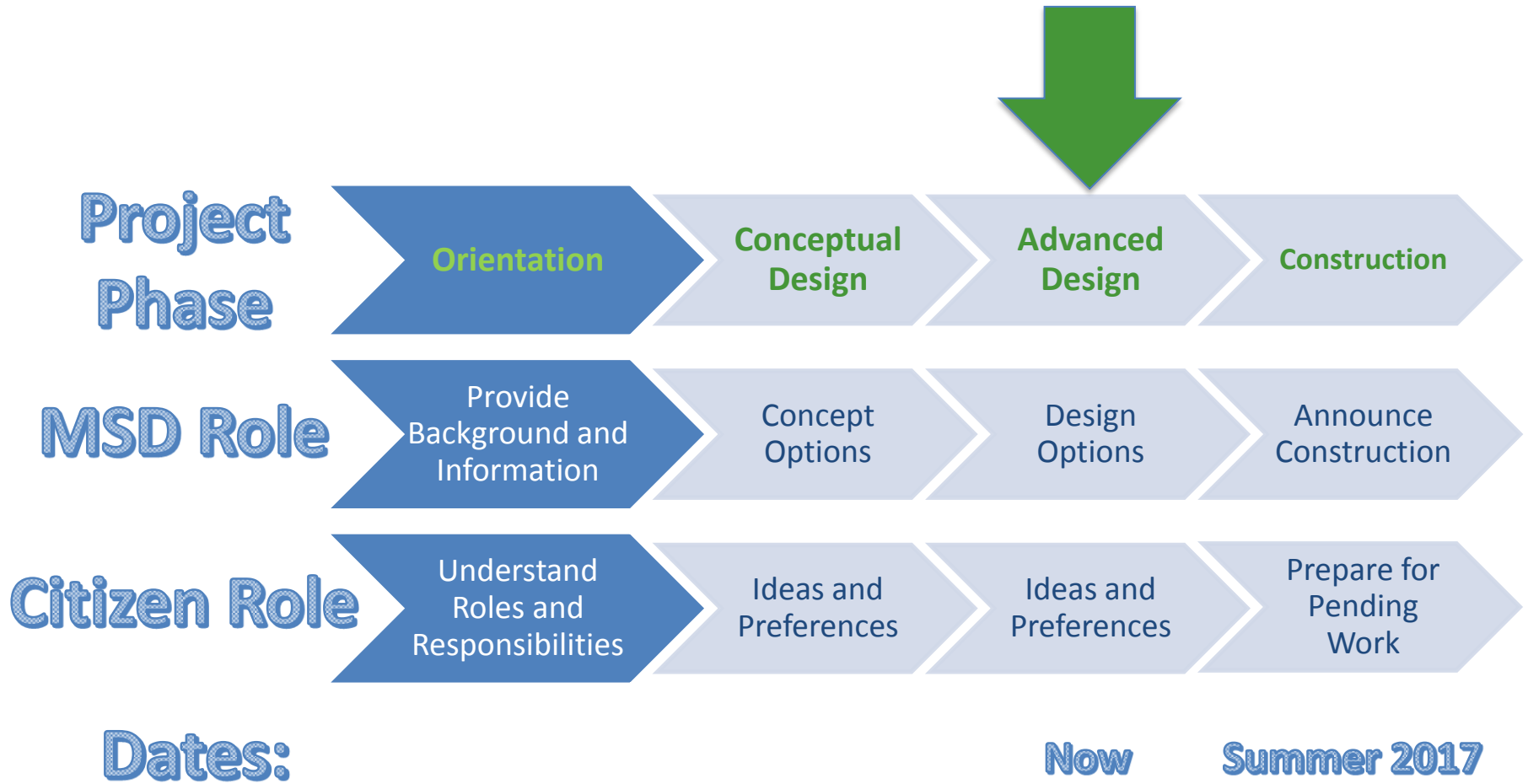
Project Phases and Roles



Project Phases and Roles

- IOAP Public Input Meeting was held at Girl Scouts of Kentuckiana on January 24, 2012
- Public Input Meeting (Orientation) was held at Louisville Collegiate School on September 16, 2014
- Conceptual Design Public Meeting was held at the Girl Scouts of Kentuckiana on March 10, 2016
- We're back to talk with you about the Advanced Design

Project Phases and Roles



3. Getting to Know You



Public Engagement Tools: “Clickers” and Online Polling

“Clickers” for Public Meetings

- Simple To Use
- Anonymous (No One Knows Your Answers)
- Simultaneous (We All See the Results At the Same Time)
- Equal Voice for All



Online Polling for Those Who Can't Attend Public Meetings

tinyurl.com/MSDI-64Grinstead3

msdprojectwin.org

PROJECT WIN
Waterway Improvements Now

Improving Our Community Waterways Together

MSD
Metropolitan Sewer District

Home About Us How You Can Help Projects Library **Public Input**

You are here: Home

search keywords go

MSD In Your Area

Rainwater can enter the sewer system during rain events and cause a mixture of sewage and rainwater to flow untreated into our waterways. MSD is using storage basins and green infrastructure to control and decrease the amount of rainwater entering the system, thus reducing overflows into our waterways. Click "Read More" to find out about projects near you.

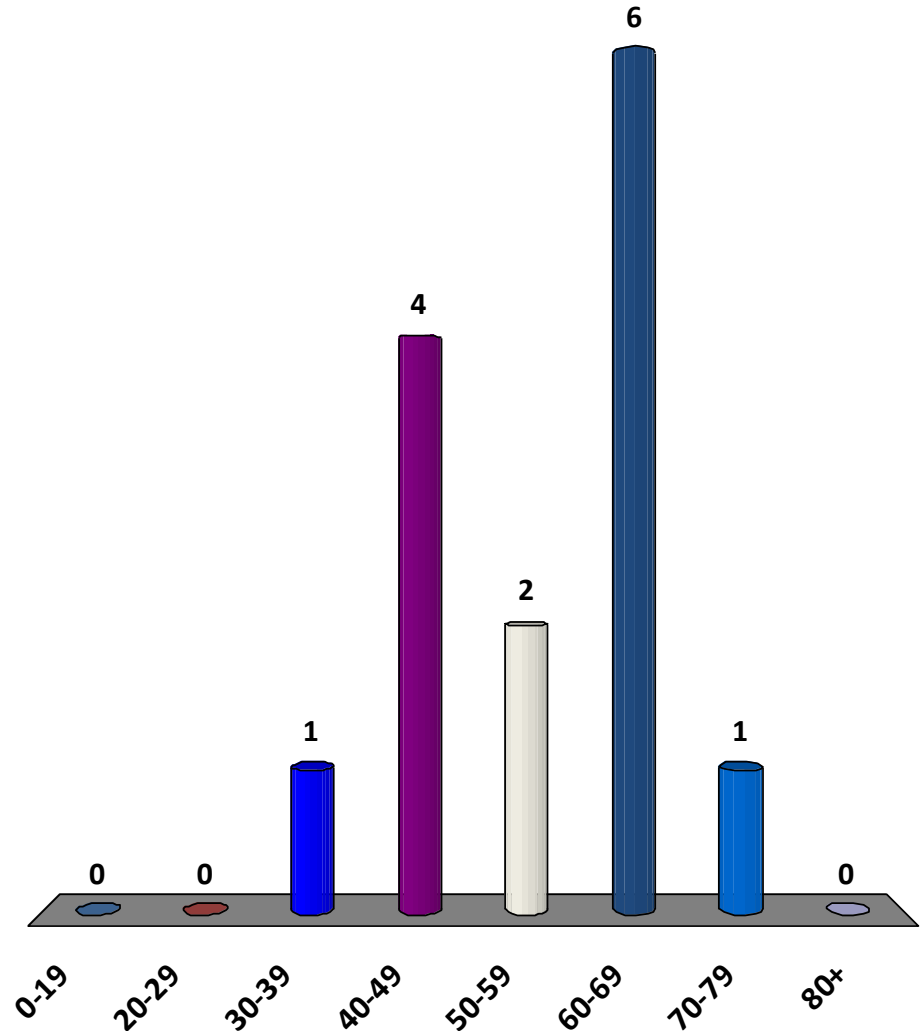
[Read More](#)

COLLABORATING PROJECTS

- Storage Basin
- Green Solution
- Eliminated Basin
- Overflow Location

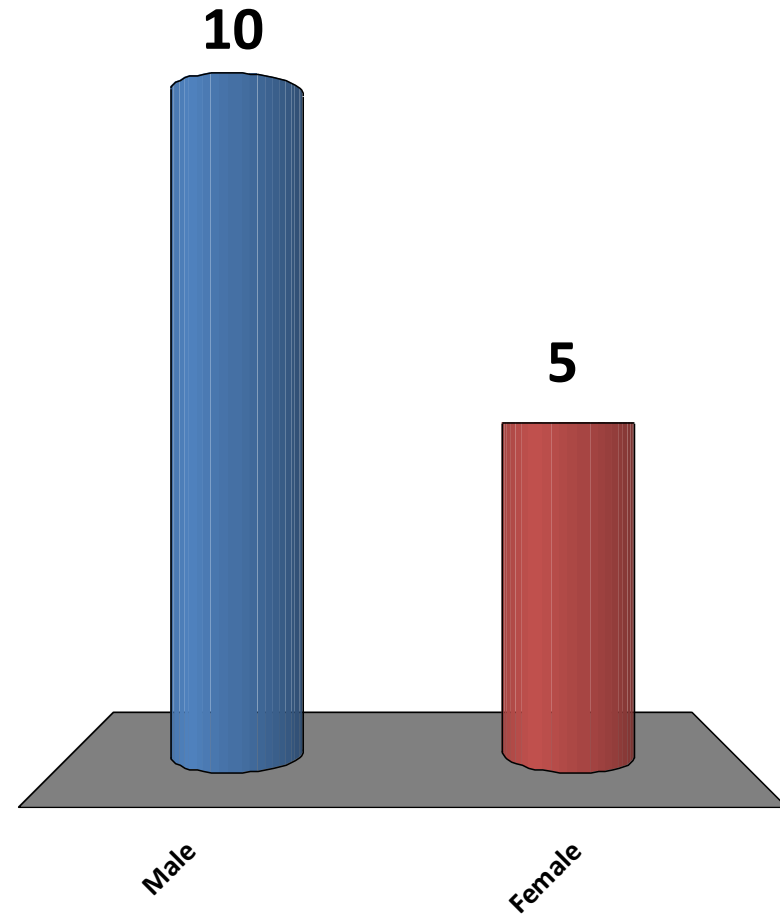
How Young Are You?

1. 0-19
2. 20-29
3. 30-39
4. 40-49
5. 50-59
6. 60-69
7. 70-79
8. 80+

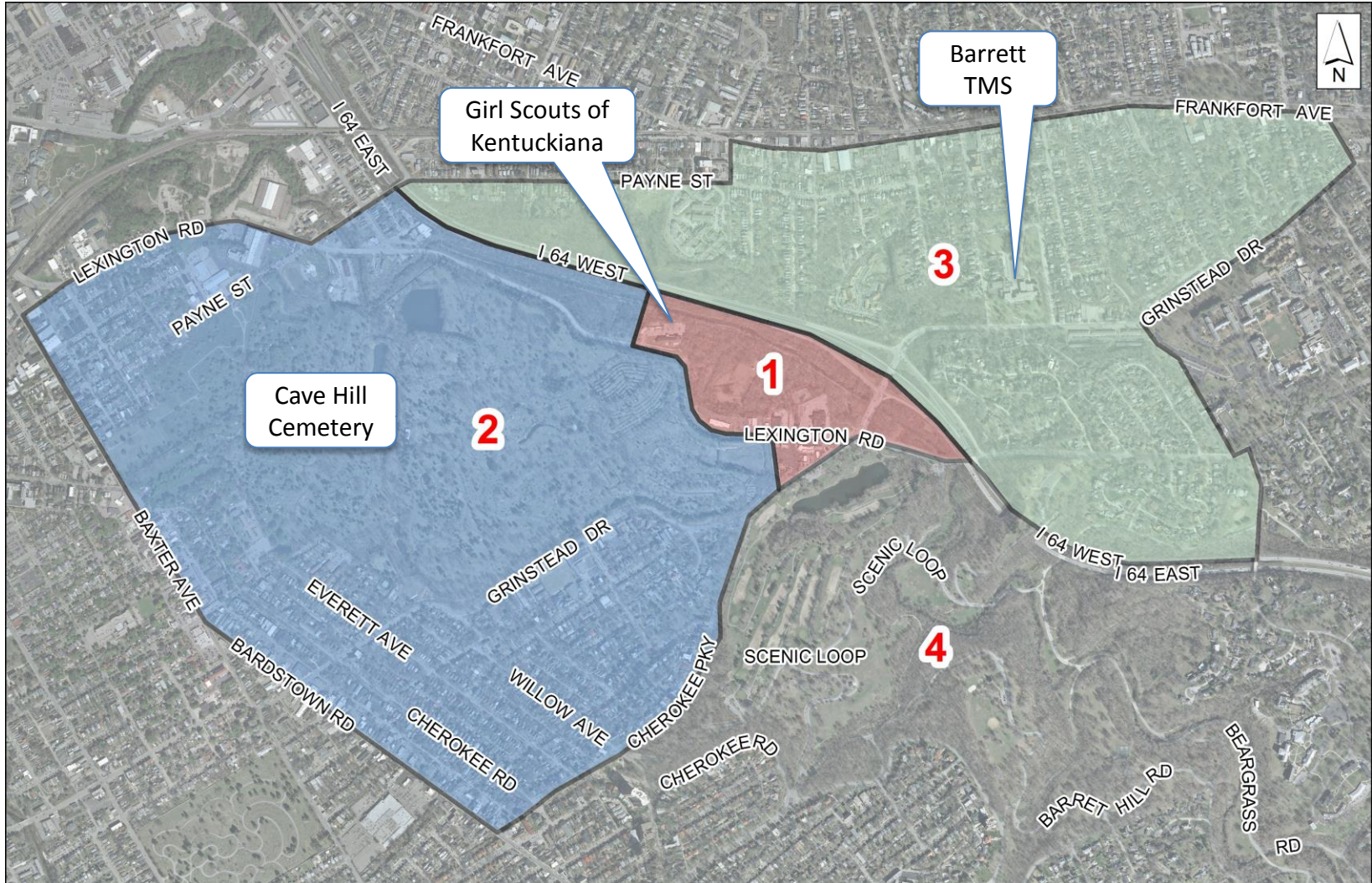


Gender?

1. Male
2. Female

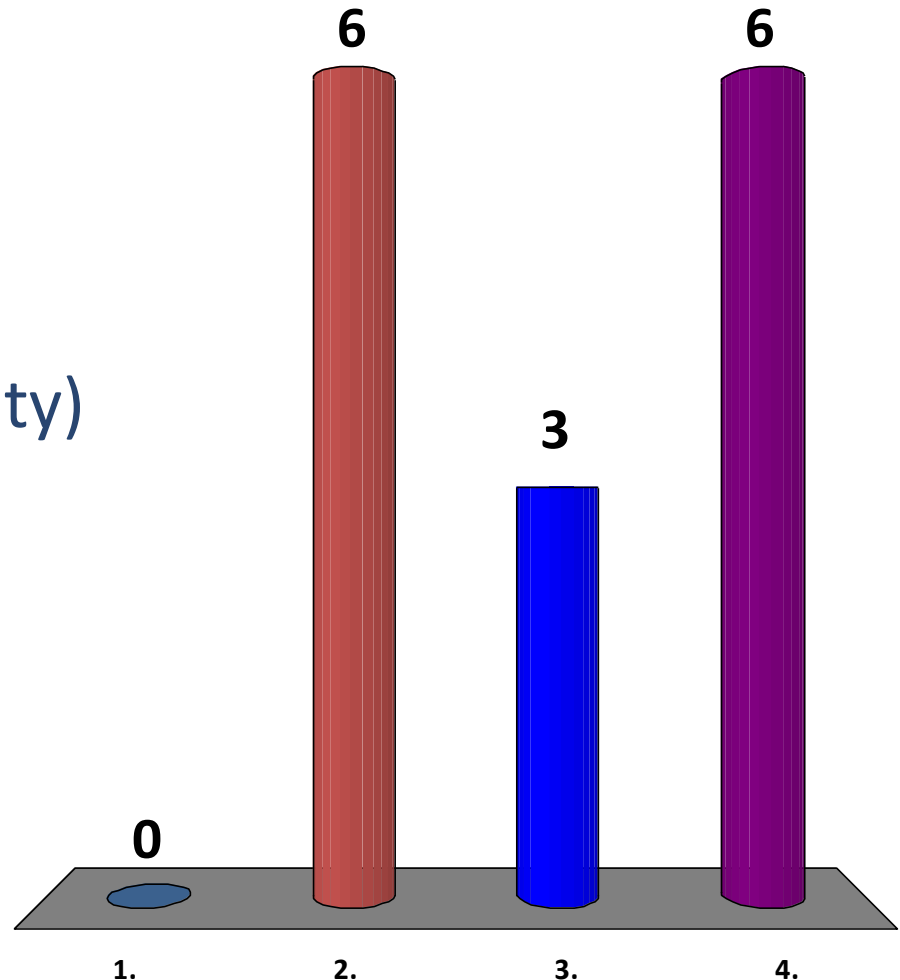


Where Do You Live, Work and Spend Your Days?

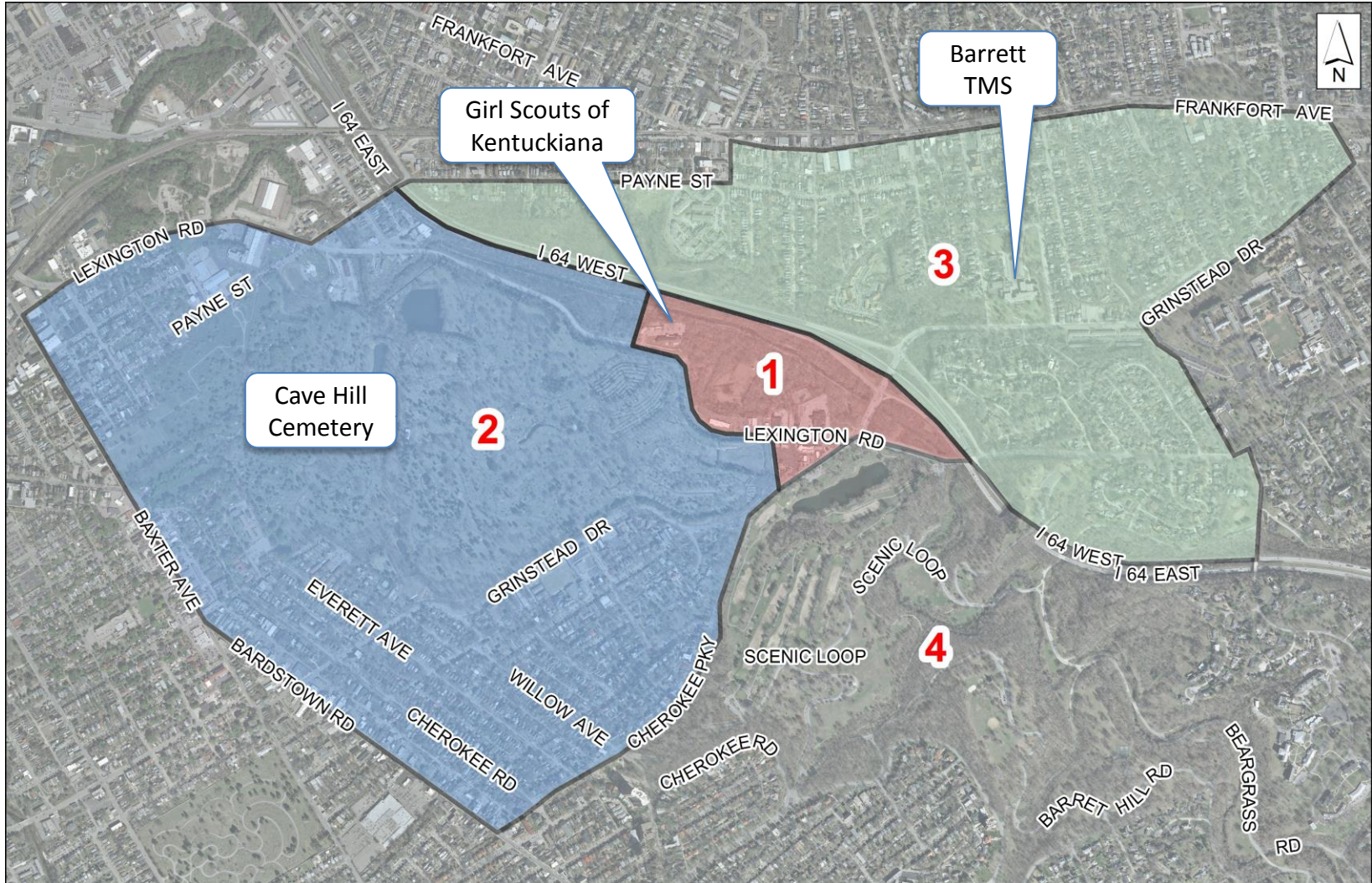


Where Do You Live?

1. Area 1
2. Area 2
3. Area 3
4. Area 4 (Rest of the City)

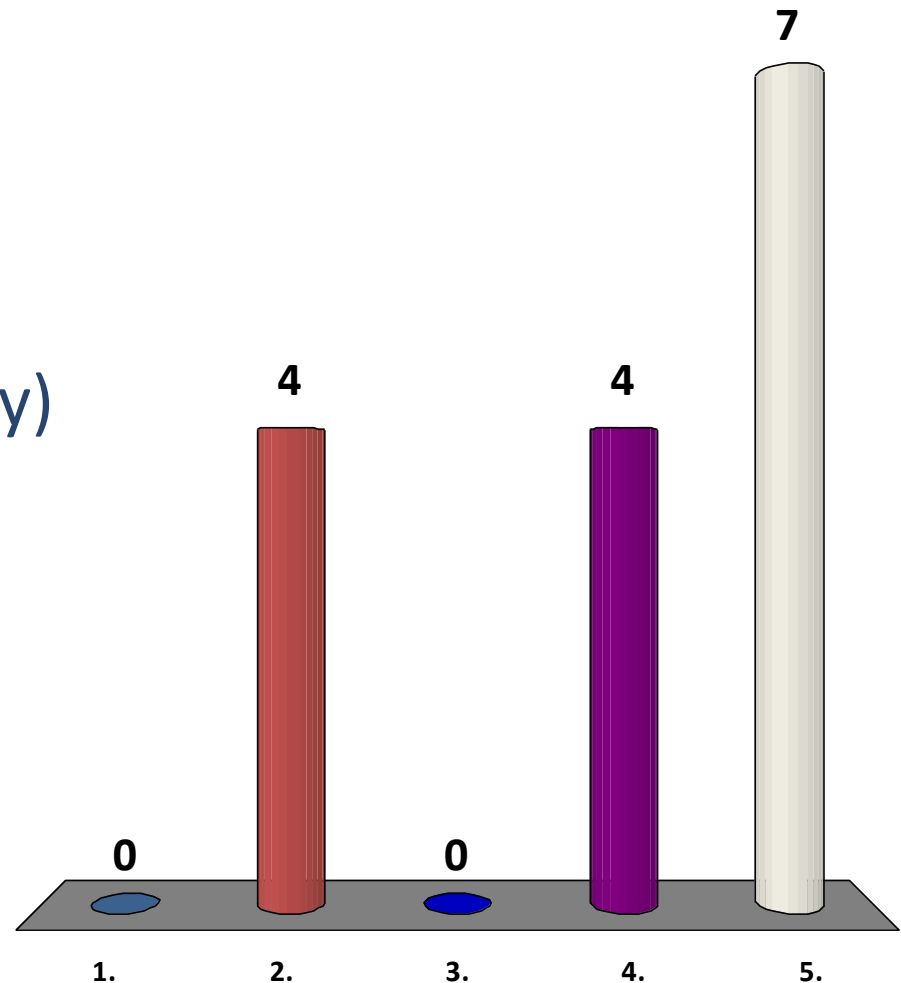


Where Do You Operate a Business?



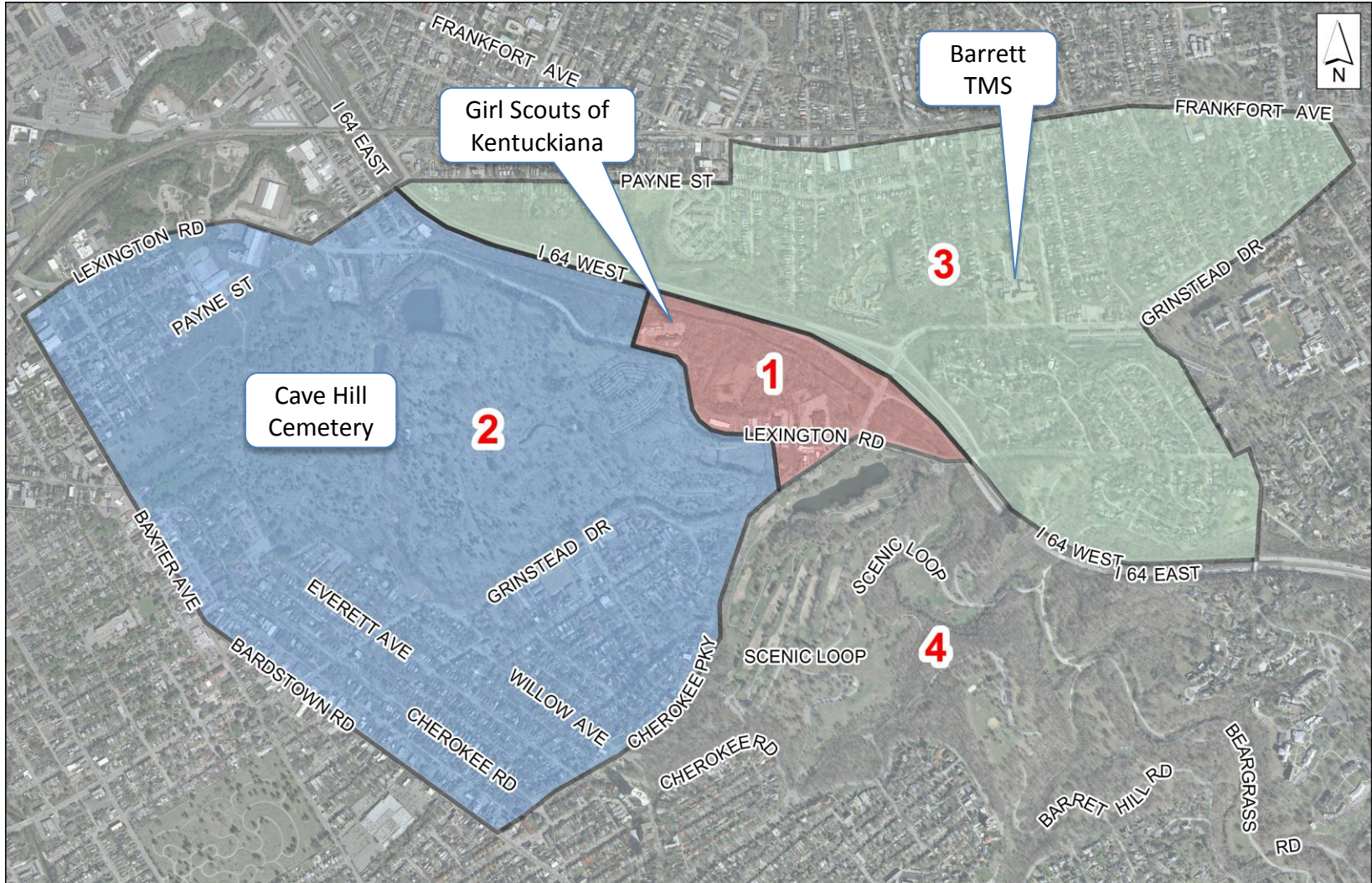
Where Do You Operate a Business?

1. Area 1
2. Area 2
3. Area 3
4. Area 4 (Rest of the City)
5. I don't operate a business



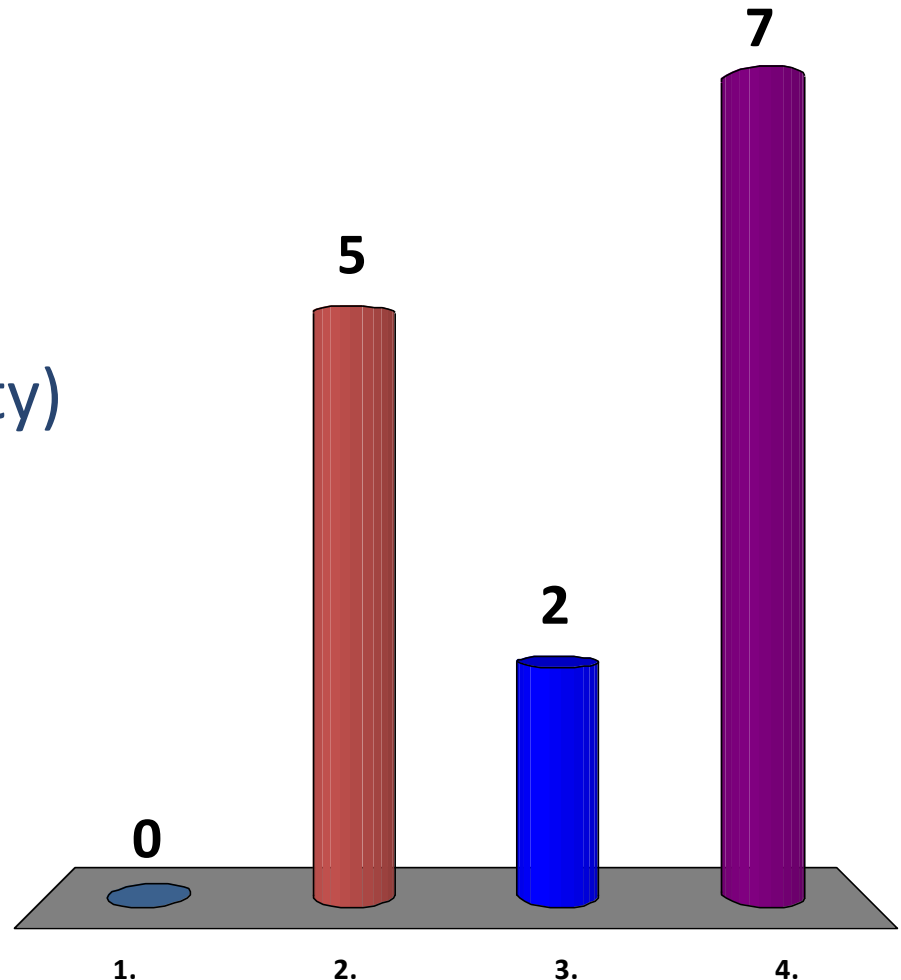
Where Do You Spend Your Days?

(i.e. work, school, volunteer, etc.)



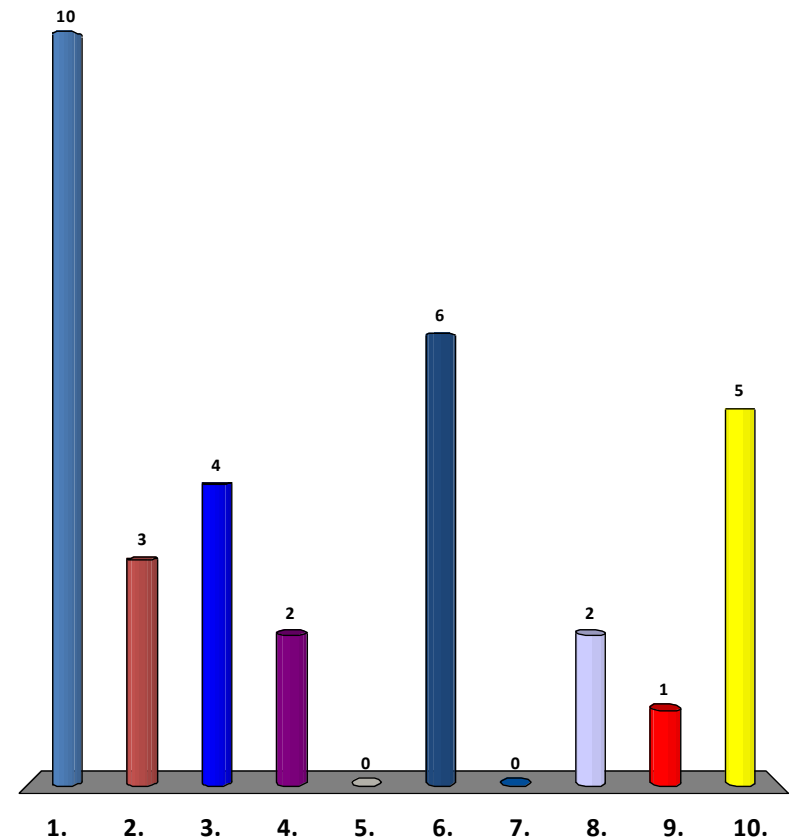
Where Do You Spend Your Days? (i.e. work, school, volunteer, etc.)

1. Area 1
2. Area 2
3. Area 3
4. Area 4 (Rest of the City)



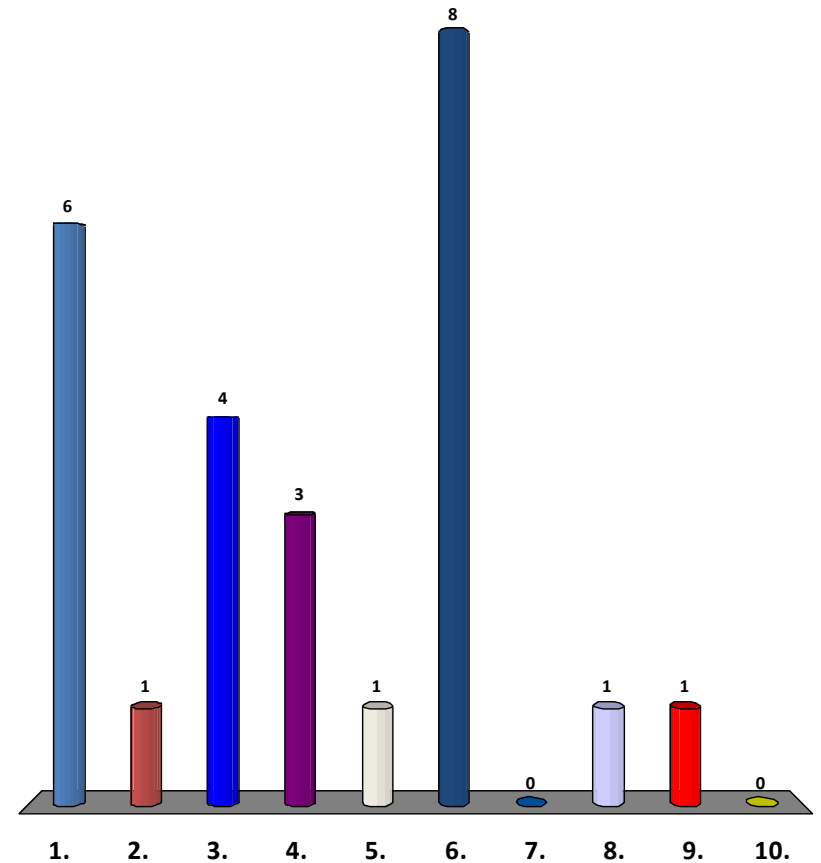
How Did You Hear About this Meeting? (Up to 3)

1. Received a Post Card
2. Courier Journal
3. Metro Council District Newsletter
4. Neighborhood Association
5. Project WIN Website
6. MSD e-mail
7. @LouisvilleMSD (Twitter)
8. MSD Streamline Newsletter
9. Flyer
10. Word of Mouth



How Would You Like to Learn About MSD's Projects? (Up to 3)

1. Post Card
2. Local Mainstream Print or Broadcast Media
3. Metro Council District Newsletter
4. Neighborhood Association
5. Project WIN Website
6. MSD email
7. @LouisvilleMSD (Twitter)
8. MSD Streamline Newsletter
9. Public Meetings
10. Metro TV Videos



4. I-64 and Grinstead CSO Basin Project



I-64 and Grinstead CSO Basin Project

- Project Facts
- Summary of Community Feedback
- Advanced Design Project Update

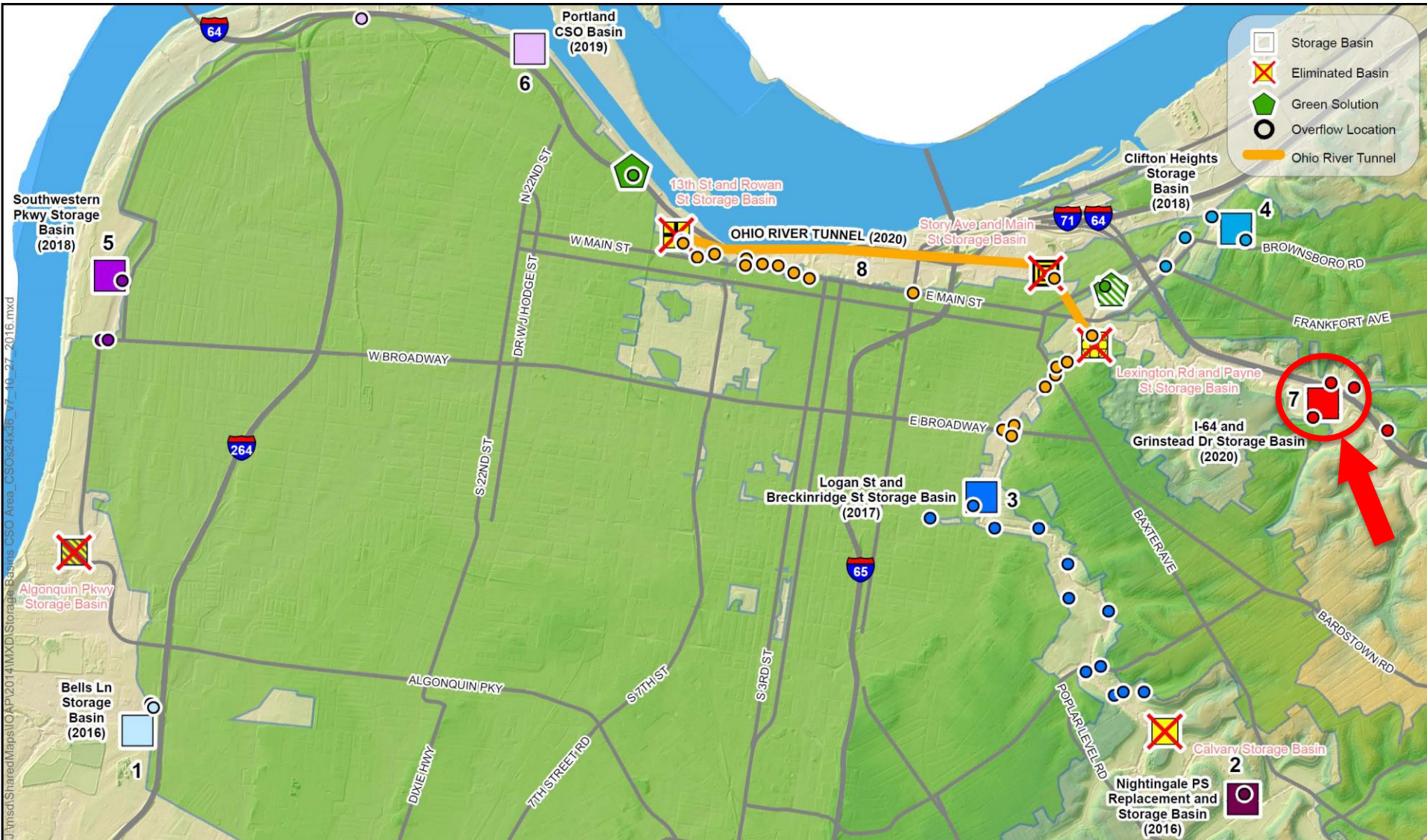
Project Facts



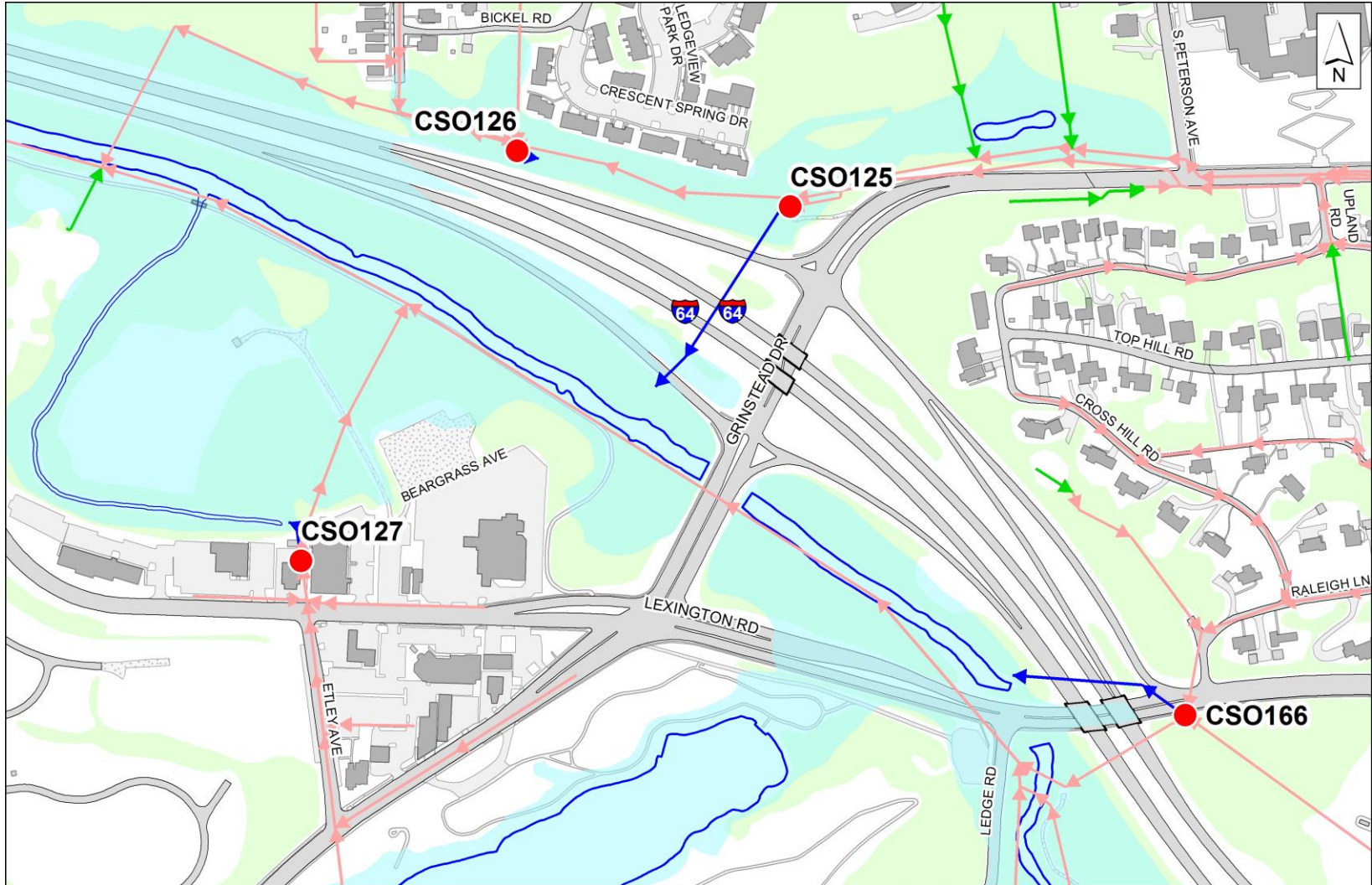
Project Design Parameters

- Basin storage volume is 8.5 Million Gallons
- Basin will be underground and covered
- Addresses three (3) CSO locations
- Level of Control (per Typical Year): Zero overflows per Typical Year
 - There were 128 overflows in 2015 resulting in 88,820,000 gallons of combined sewer overflows entering Middle Fork Beargrass Creek

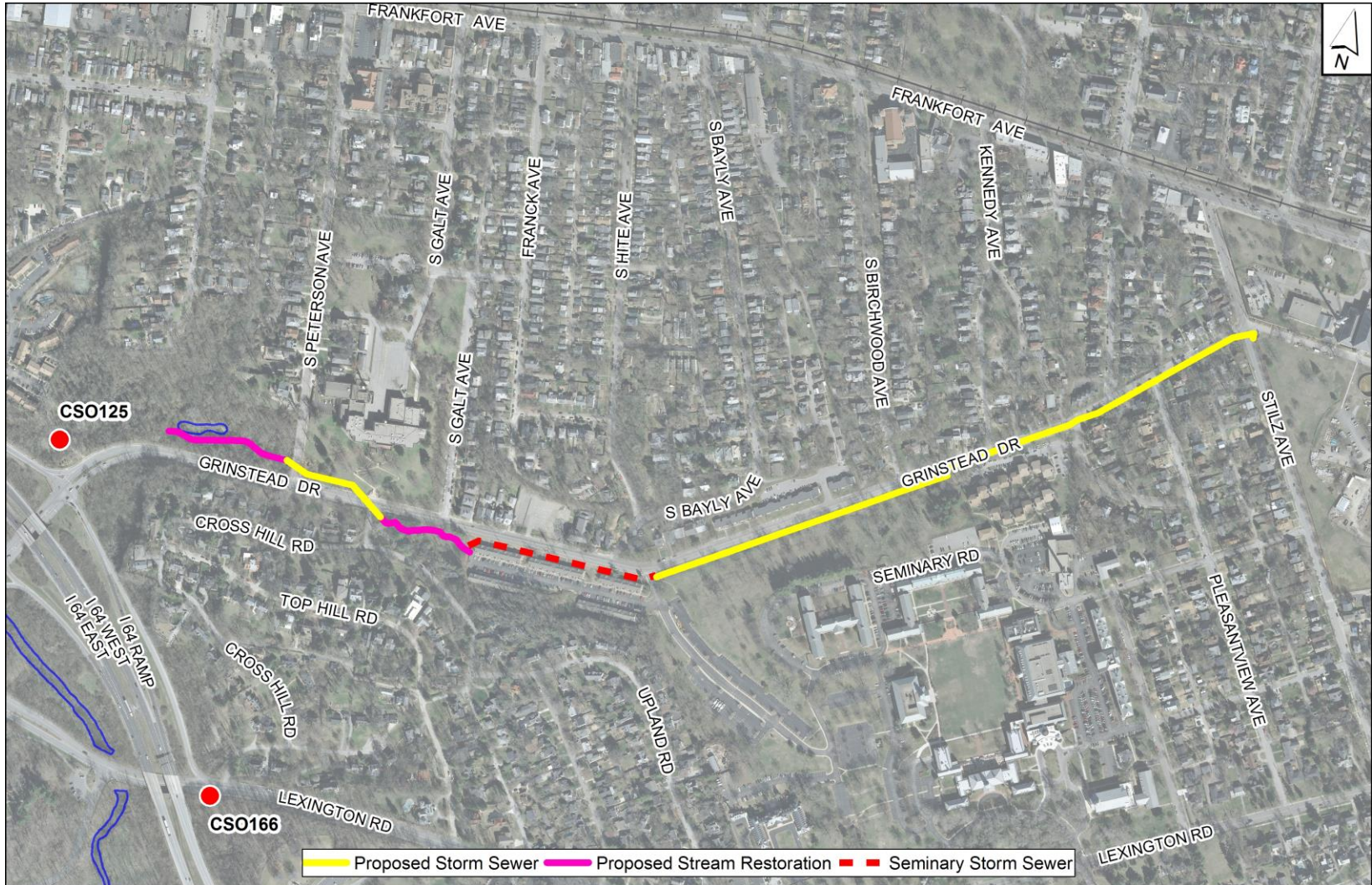
CSO Storage Basins per Consent Decree



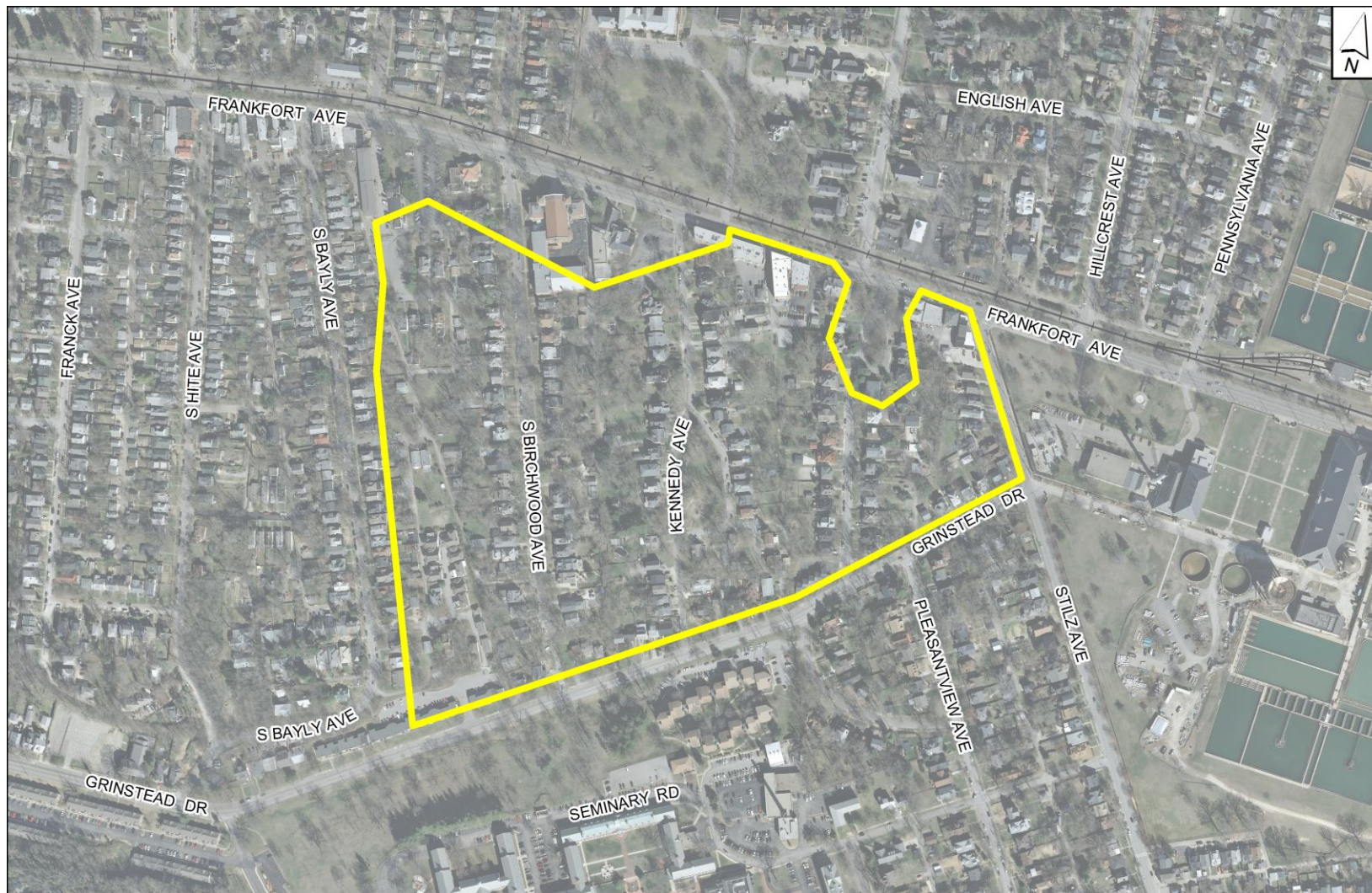
Project Area



CSO 125 Stormwater Separation



Downspout Disconnection Target Area



Summary of Community Feedback



Community Feedback

- Conceptual Design Public Meeting held on March 10, 2016 and Online Polling was active following the meeting through May 13, 2016
 - 42 total participants
- Participants provided feedback about **project factors and site considerations that were most important to them**
- MSD used this information to enhance the project design
- Most important items received more emphasis
- Some items involve future commitments from other agencies

Community Feedback: Higher Priorities

1. Preserve/enhance existing trail	✓
2. Preserve/enhance wetlands	✓
3. Tree replacement	✓
4. Green infrastructure for parking lot	✓
5. Aesthetics of the proposed control building	✓
6. New trailhead including a parking lot	✓
7. Bicycle facilities	✓

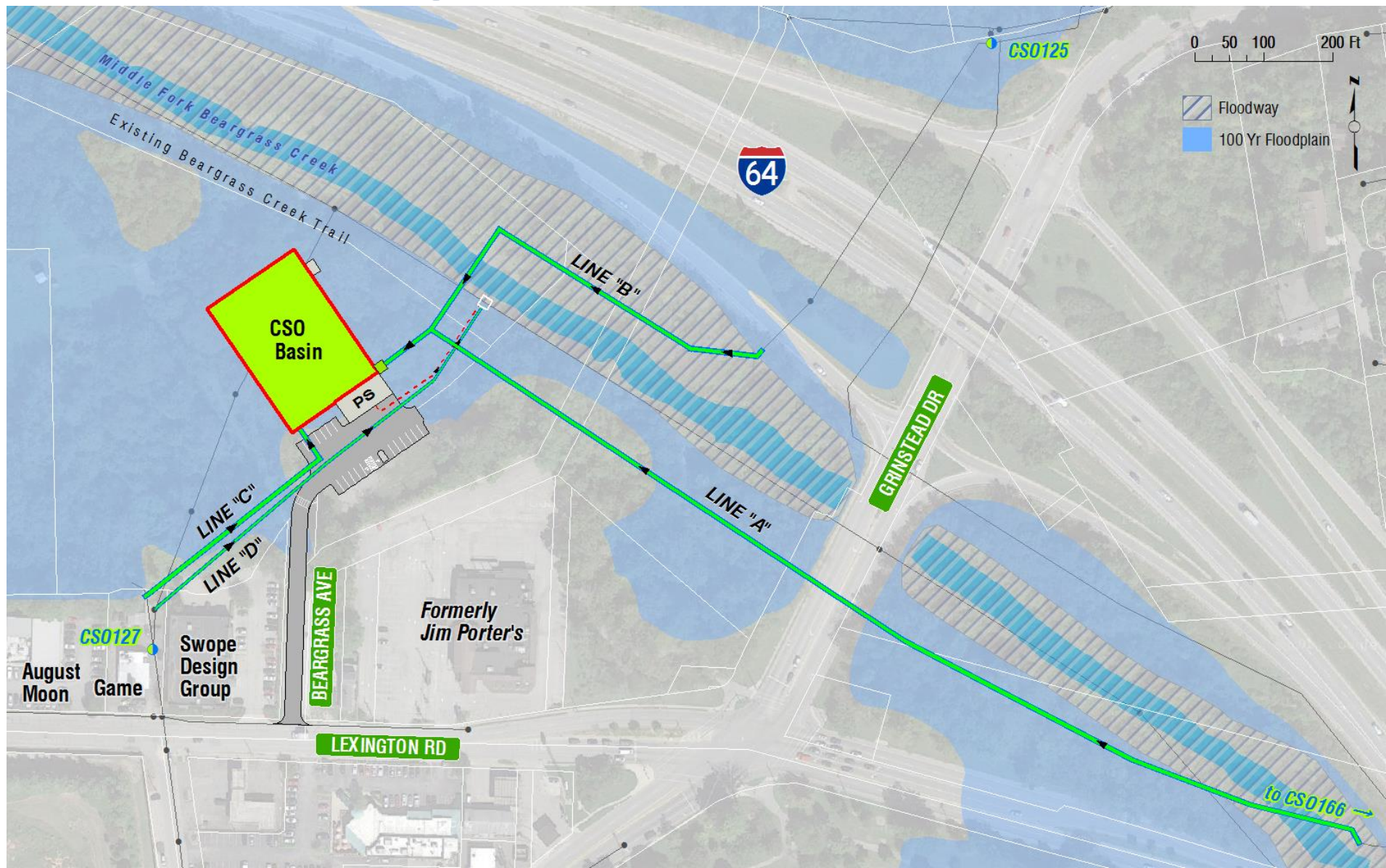
Community Feedback: Lower Priorities

8. Stream meanders	Stream Enhancement
9. Educational signage along the trail	✓
10. Offsite mitigation for tree loss	Onsite Mitigation
11. Site aesthetics during construction	✓
12. Lighting for paths	Other Agency Opportunity
13. Community garden	Other Agency Opportunity
14. Dog run / agility field	Other Agency Opportunity
15. Athletic field	Other Agency Opportunity
16. Picnic facilities	Other Agency Opportunity
17. Playground	Other Agency Opportunity

Advanced Design Project Update



Project Design Update



Site Plan

LEGEND

1. Through trail
2. Loop trail
3. Trailhead with public parking
4. Lawn
5. Existing trail enhancement
6. Rain garden
7. Future MSD Urban Reforestation Program area
8. Stream enhancement
9. Wetland preservation area



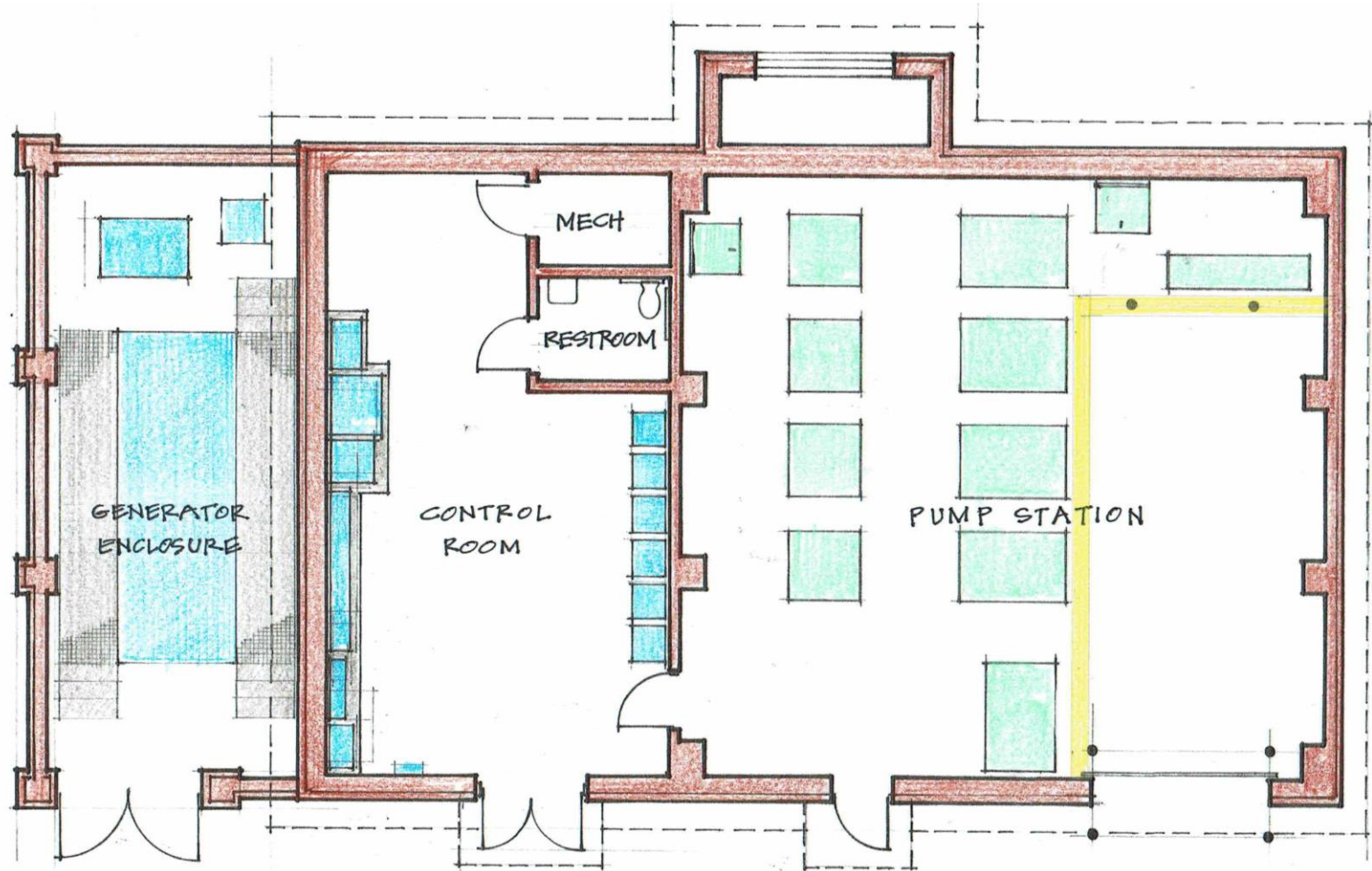
Site Plan



Site Plan



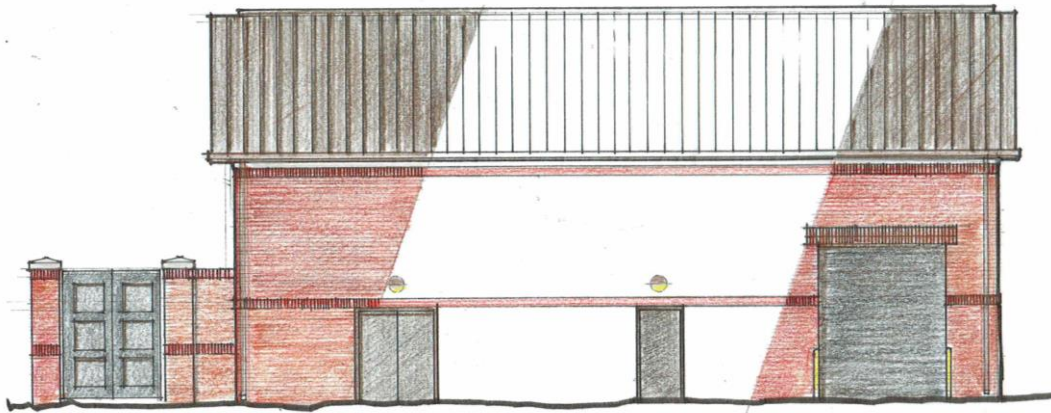
Control/Pump Station Building



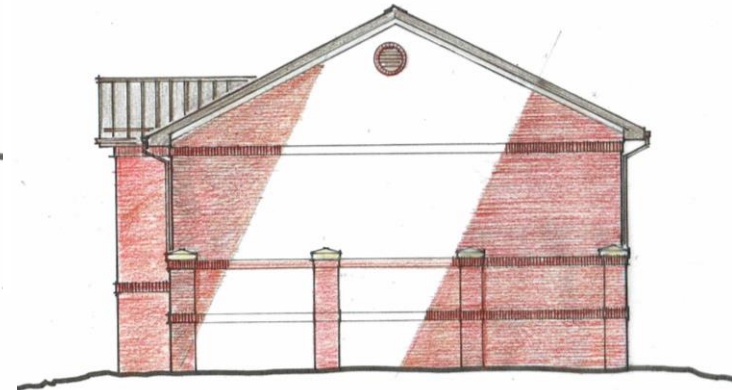
CONTROL BUILDING PLAN



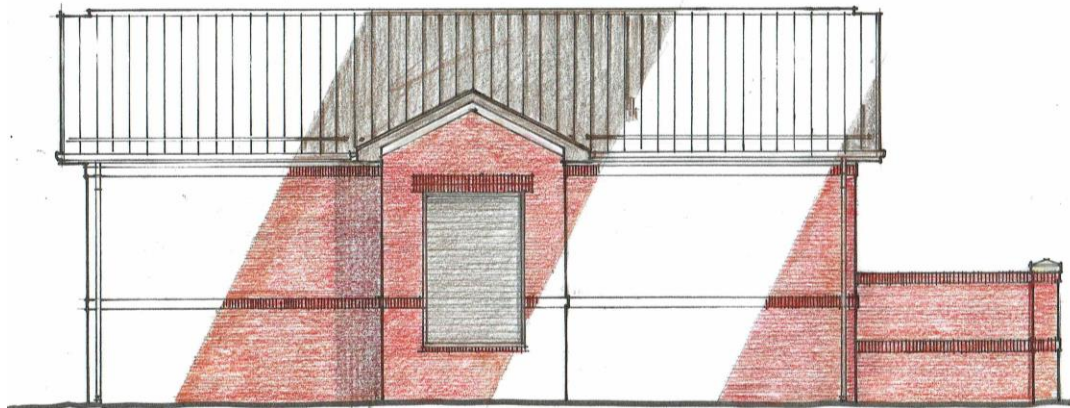
Control/Pump Station Building Façade Alternative A



A FRONT ELEVATION
CONTROL BUILDING



A SIDE ELEVATION
CONTROL BUILDING

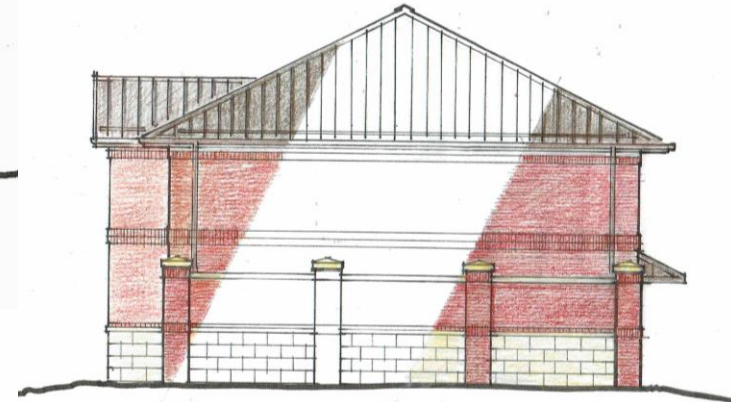


A REAR ELEVATION
CONTROL BUILDING

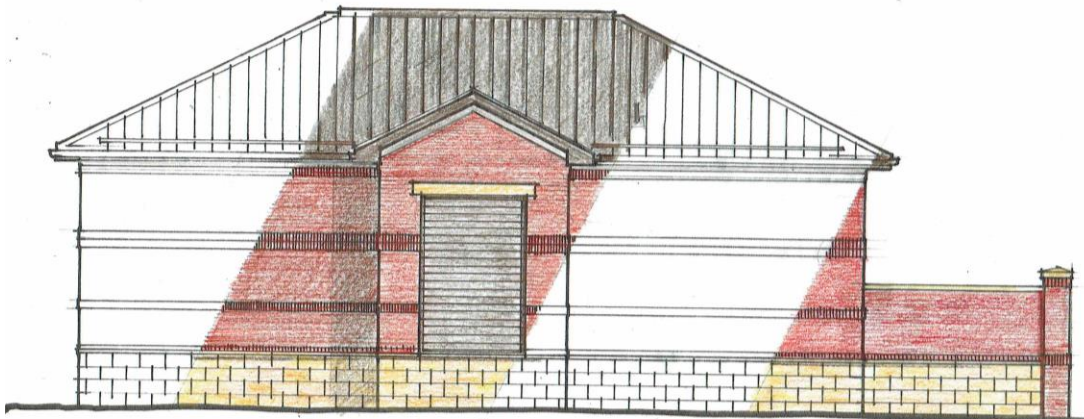
Control/Pump Station Building Façade Alternative B



B FRONT ELEVATION
CONTROL BUILDING



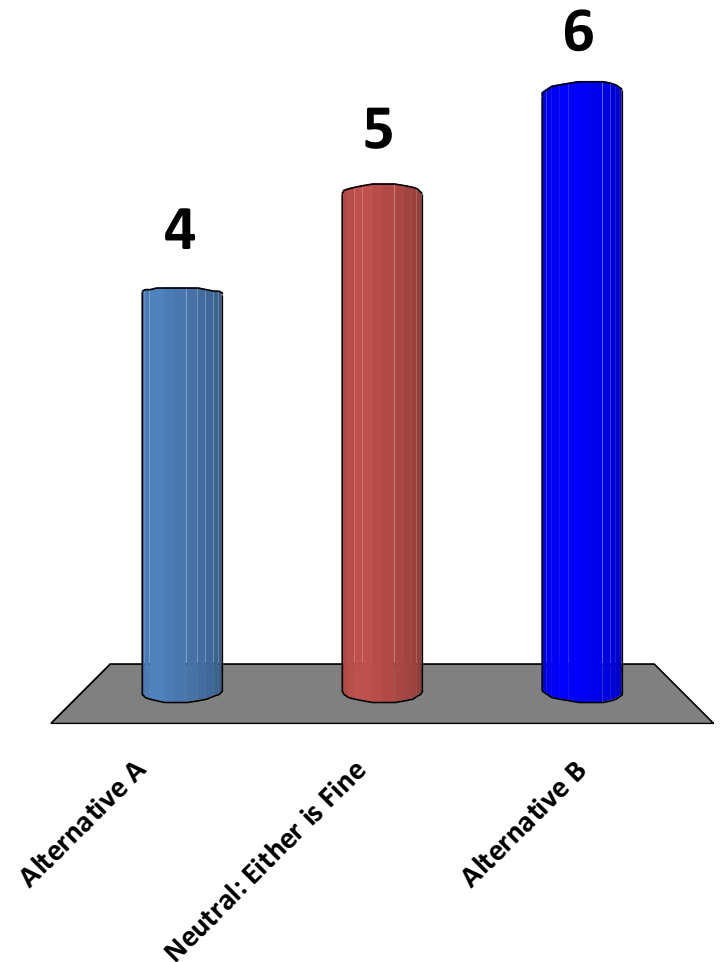
B SIDE ELEVATION
CONTROL BUILDING



B REAR ELEVATION
CONTROL BUILDING

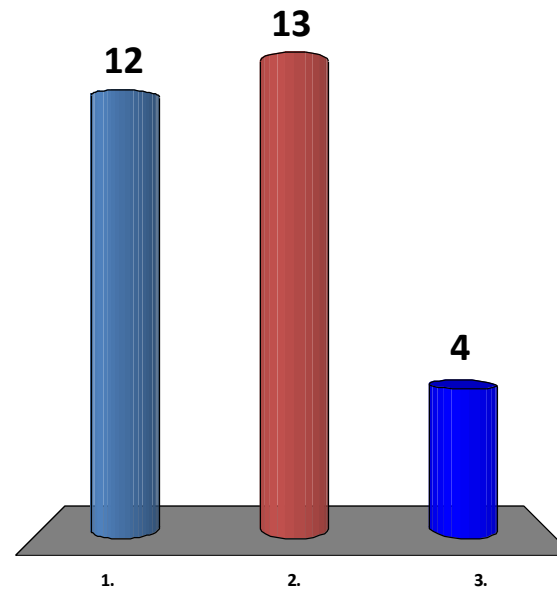
Which Control/Pump Station Building Façade Alternative do you prefer?

1. Alternative A
2. Neutral: Either is Fine
3. Alternative B



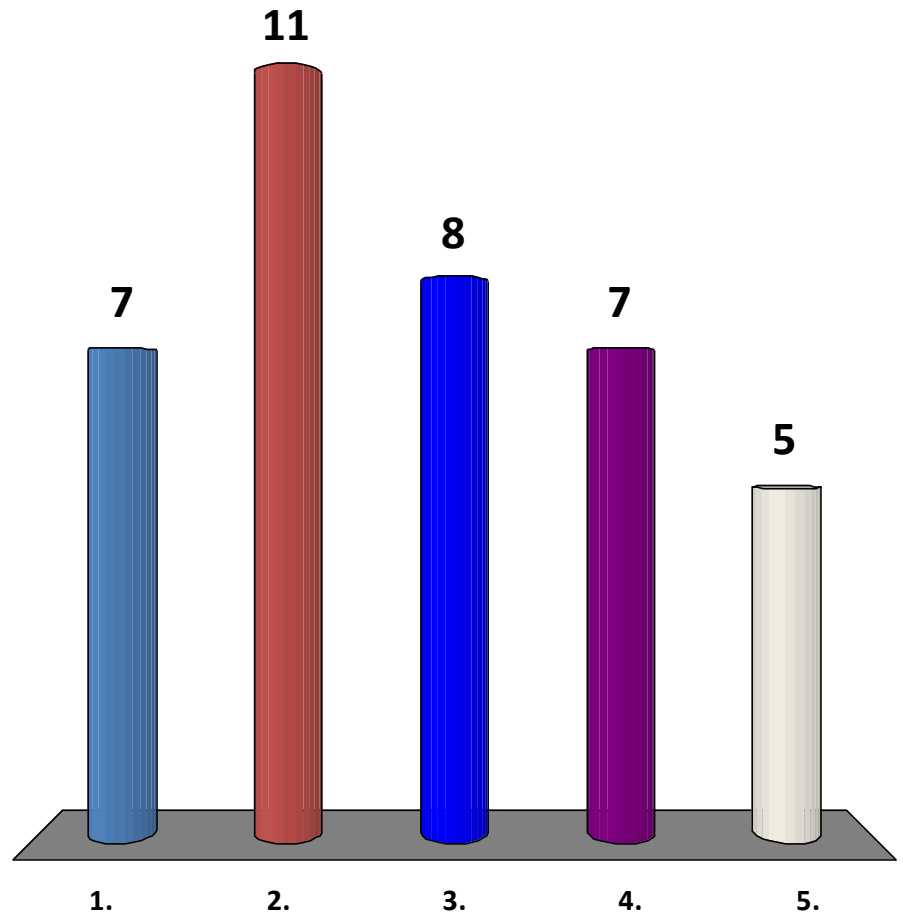
Strengths of the Overall Design?

1. Wetland retention
2. New trail
3. Parking lot



Concerns of the Overall Design?

1. No restrooms
2. Redevelopment of Jim Porters
3. Planting of trees
4. Maintenance responsibilities
5. Additional access to trail



5. Next Steps



Next Steps

- Finalize the Project Design
- Coordinate with Project Partners
- Future Public Outreach:
 - Pardon our Dust Meeting Summer 2017
- Construction Start Summer 2017
- Construction Completion Spring 2020
- **Consent Decree Deadline December 31, 2020**

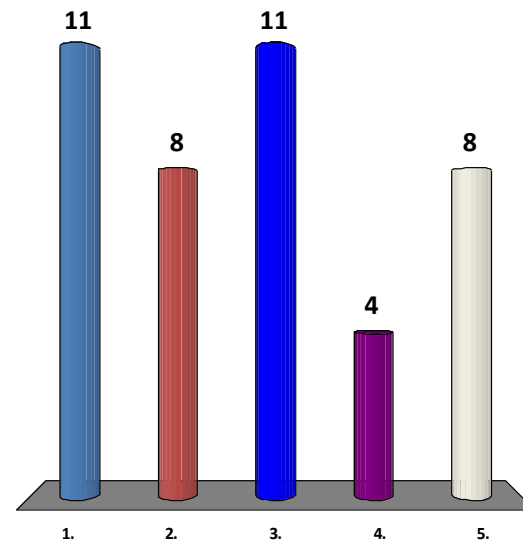
For more information on this project please attend our Pardon our Dust Meeting in the Summer of 2017.

6. Feedback



We'll be back to meet with you before construction starts. Are there particular questions we should be prepared to answer then?

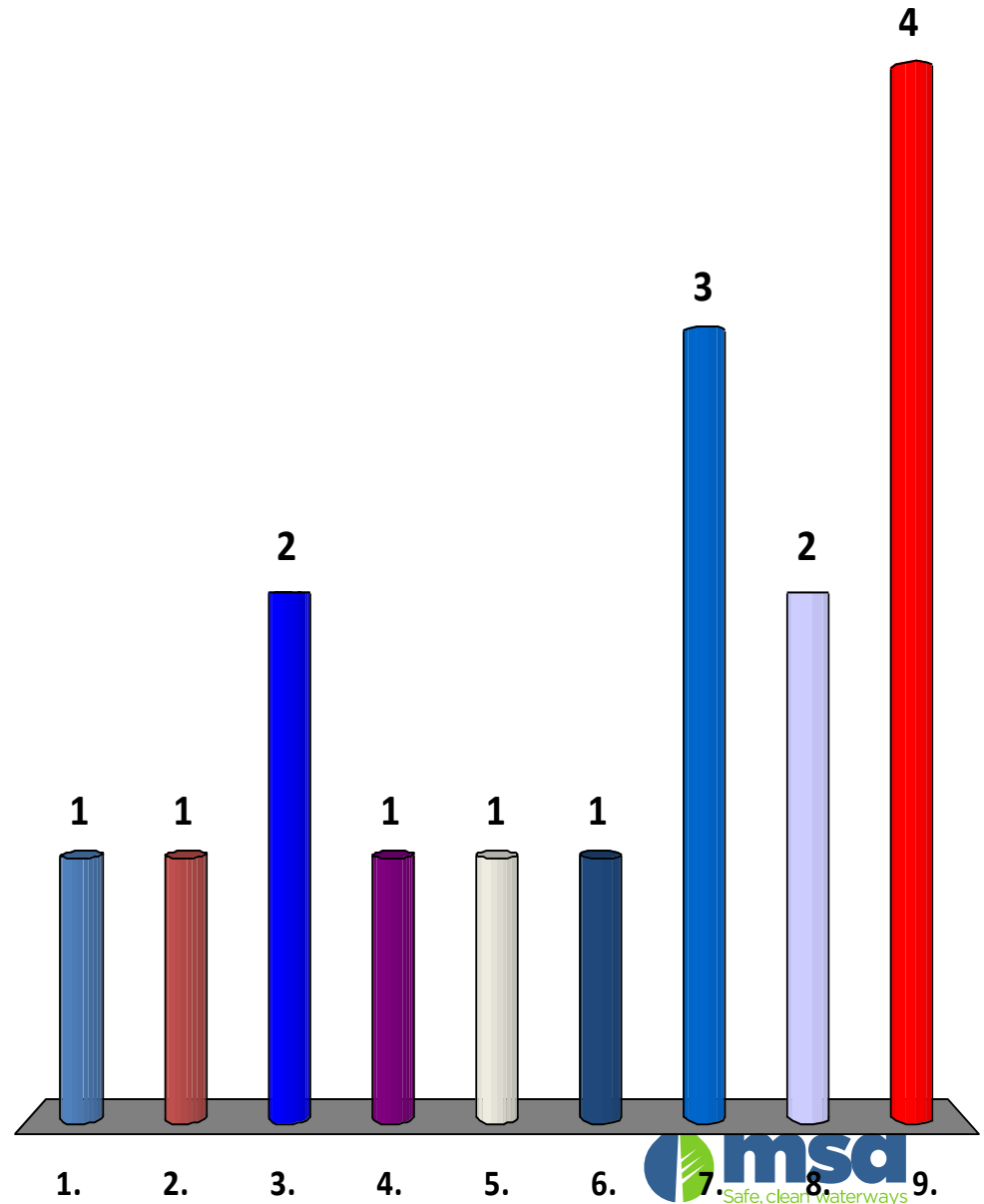
1. How will Beargrass Creek be protected during construction?
2. Will there be blasting?
3. Duration and times of trail closing
4. Notification of trail closing
5. Wider area needs to know about blasting in advance



How Satisfied Are You With This Feedback Method?

1. Very Unsatisfied
2. Unsatisfied
3. Somewhat Unsatisfied
4. Slightly Unsatisfied
5. No Particular Opinion
6. Slightly Satisfied
7. Somewhat Satisfied
8. Satisfied
9. Very Satisfied

Mean = 6.06



**For general information or emergencies
regarding the MSD system, call:**

502.587.0603

Your Call Will be Answered

- By an MSD Staff Member
- Around the Clock
- Every Day of the Year

Find Out More

msdprojectwin.org



Improving Our Community Waterways Together



[Home](#)

[About Us](#)

[How You Can Help](#)

[Projects](#)

[Library](#)

[Public Input](#)

You are here: [Home](#)

search keywords

go

MSD In Your Area

Rainwater can enter the sewer system during rain events and cause a mixture of sewage and rainwater to flow untreated into our waterways. MSD is using storage basins and green infrastructure to control and decrease the amount of rainwater entering the system, thus reducing overflows into our waterways. Click "Read More" to find out about projects near you.

[Read More](#)



Please Tell Your Friends and Neighbors to
Take the Survey Online!

tinyurl.com/MSDI-64Grinstead3



**Thank You for
Your Participation**

